


Memo

To: City Council
From: Amy E. Gilson, P.E., Director of Public Works
Date: August 26, 2022
Re: Emergency Purchase



In accordance with Section 2-182 of the City Ordinances, this memo is to advise you of an emergency purchase for repairs to the Drain Pit #1 sewage pump.

The pump had been tripping the breaker when it was called to turn on. The pump was pulled, and after determining that the pump couldn't be repaired in house it was taken to Kennedy Industries who repairs several of our pump brands. In order to determine the issues, Kennedy needed to tear down the pump. They have isolated the problems and submitted a quote for \$9,995.00 to repair the pump. The cost of a new pump is approximately \$16,200.00 and is 14-16 weeks out. It is the consensus of the staff that we repair the pump which should give us at least another five years of service.

Because the estimated time to repair this pump is six weeks, it was necessary to approve the repairs as soon as possible.

Please let me know if you have any questions.

cc: Erin LaPere, City Manager

QUOTATION		
DATE	NUMBER	PAGE
8/25/2022	0048151	1 of 2

UN-APPROVED

B CHA300
I CITY OF CHARLOTTE
L 111 E. LAWRENCE AVENUE
T CHARLOTTE, MI 48813
O

Accepted By: _____

Date: _____

PO#: _____

Ship To: _____

ATTENTION:

MATT GRIFFITH

517-231-2324

mgriffith@charlottemi.org

WE ARE PLEASED TO PROPOSE THE FOLLOWING FOR YOUR CONSIDERATION:

CUSTOMER REF/PO#		JOB TITLE	SLP	SHIPPING TYPE
		WWTP, DRAIN PIT PUMP #1, FLYGT, PUMP, 3127.095-1450010, SEWAGE	REA/SPD	CUSTOMER PICKUP
QTY	DESCRIPTION			

THE FOLLOWING QUOTE IS FOR THE COST OF LABOR AND MATERIALS TO REPAIR THE ABOVE REFERENCED PUMP.

NEW PARTS REQUIRED:

- (1) UPPER MECHANICAL SEAL
- (1) LOWER MECHANICAL SEAL
- (1) UPPER BEARING
- (1) LOWER BEARING
- (1) O-RING KIT
- (1) LEAKAGE SENSOR
- (1) STATOR - FACTORY MUTUAL EXPLOSION PROOF
- (1) E.L. LEAD THROUGH UNIT
- (1) OIL HOUSING BOTTOM
- (1) SET OF FASTENERS
- (1) SLIDING BRACKET
- (1) GASKET
- (2) SEAL SLEEVES

LABOR REQUIRED:

PERFORM ALL ELECTRICAL TESTS AND TEST RUN.

DISASSEMBLE, SANDBLAST, CLEAN AND INSPECT COMPLETE PUMP.

CLEAN, BAKE AND TEST STATOR ASSEMBLY.

DIMENSIONALLY MEASURE ALL OPERATING CLEARANCES AND RECORD ON INSPECTION REPORT.

CERAMIC COAT VOLUTE DISCHARGE FLANGE.

ASSEMBLE ALL ROTATING PARTS ON SHAFT AND PLACE IN BALANCE MACHINE.

VERIFY TOTAL INDICATOR RUN OUTS THEN DYNAMICALLY BALANCE ROTOR TO ISO G2.5.

ASSEMBLE PUMP COMPLETE WITH NEW PARTS LISTED.

PRESSURE TEST SEAL CHAMBER TO ENSURE LEAK FREE.

INSTALL NEW OIL OR COOLANT IN SEAL CHAMBER.

PERFORM ALL ELECTRICAL TESTS AND TEST RUN.



KENNEDY
INDUSTRIES

INNOVATE
SOLVE
MONITOR
REPAIR

QUOTATION

DATE	NUMBER	PAGE
8/25/2022	0048151	2 of 2

QTY	DESCRIPTION
-----	-------------

PRESERVE, CRATE AND PREPARE FOR CUSTOMER PICKUP.

TOTAL REPAIR COST: \$9,995.00

DELIVERY: 6 WEEKS (AFTER RECEIPT OF ORDER)

PLEASE PROVIDE WRITTEN OR VERBAL AUTHORIZATION SO THAT WE MAY RESPOND TO YOUR REQUIREMENTS.

IF YOU HAVE ANY QUESTIONS, COMMENTS, OR ARE IN NEED OF ANY ADDITIONAL INFORMATION PLEASE FEEL FREE TO CONTACT ME AT (248) 684-1200.

SINCERELY,

MIKE HORN
MHORN@KENNEDYIND.COM
REPAIR CENTER MANAGER

SPD

This quote is subject to and incorporates by reference Kennedy Industries, Inc.'s ("Kennedy") Terms & Conditions (Rev'd 4/2019) and Customer Warranty available at www.kennedyind.com which will be provided by email upon written request. Kennedy reserves the right to change the Terms & Conditions and Customer Warranty for future orders. By accepting this quote and/or issuing a purchase order relative to this quote, buyer expressly agrees to the provisions set forth in the Terms & Conditions and Customer Warranty posted on Kennedy's website.

**QUOTE VALID FOR 30 DAYS. CREDIT CARD PAYMENTS ARE SUBJECT TO AN ADDITIONAL 3%
CHARGE NO TAXES OF ANY KIND ARE INCLUDED IN THIS PROPOSAL. PAYMENT TERMS: NET 30**

TOTAL: \$9,995.00

P.O. Box 930079 Wixom, MI 48393 - 4925 Holtz Drive Wixom, MI 48393 - Phone: 248-684-1200 - Fax: 248-684-6011

www.Kennedyind.com



August 25, 2022

Mr. Matt Griffith
1005 Paine Drive
Charlotte, MI 48813

RE: Flygt 3127.095 WWTP, Drain Pit #1 Sewage Pump
Serial Number: 1450010
Customer Reference Order #: N/A
Kennedy Industries #: 117055-001

Mr. Griffith:

Attached are photos with descriptions of the parts in need of repair or replacement. If you have any questions, please do not hesitate to contact us.

Sincerely,

Mike Horn

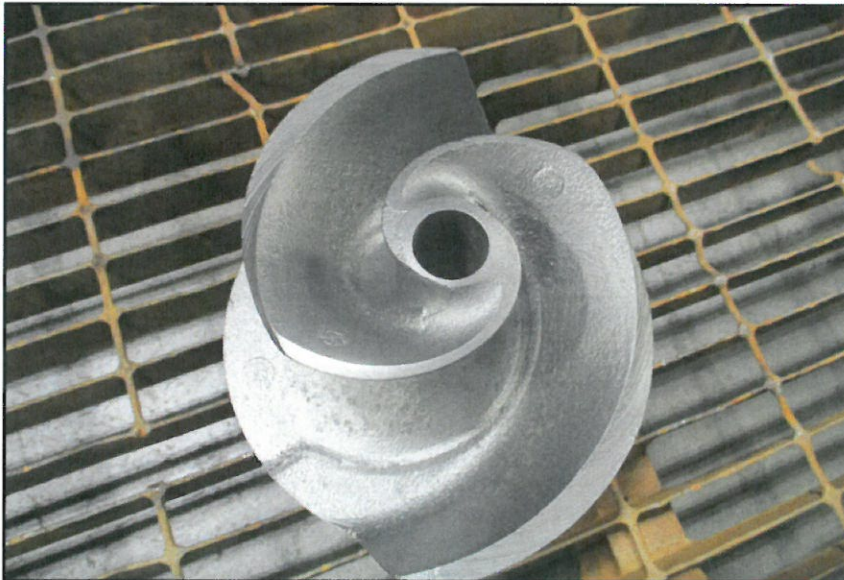
Repair Center Manager
KENNEDY INDUSTRIES, INC.

PUMP



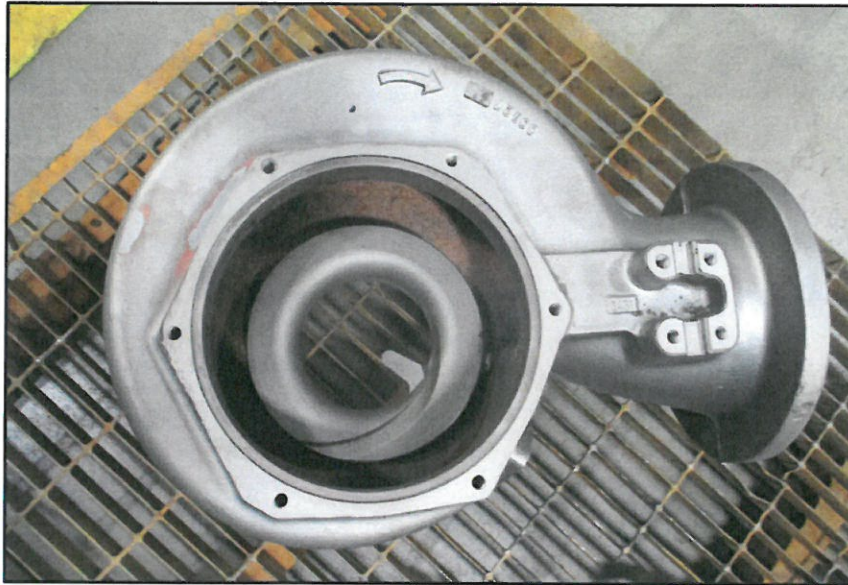
- Pump at disassembly.
- Pump spins freely by hand.
- Pump is 8 years old.
- Bearings, mechanical seal, and o-rings will be replaced with new.

IMPELLER



- Impeller bore clearance to shaft is 0.002" and within specification.
- Impeller is in good condition and will be reused.

VOLUTE / WEAR PLATE



- Impeller vane face clearance to wear plate is 0.016", specification is 0.008-0.020".
- Impeller ring OD clearance to case ring ID is 0.088" specification is 0.090-0.120".
- Parts will be reused, clearances will be restored to specification at assembly.

DISCHARGE FLANGE



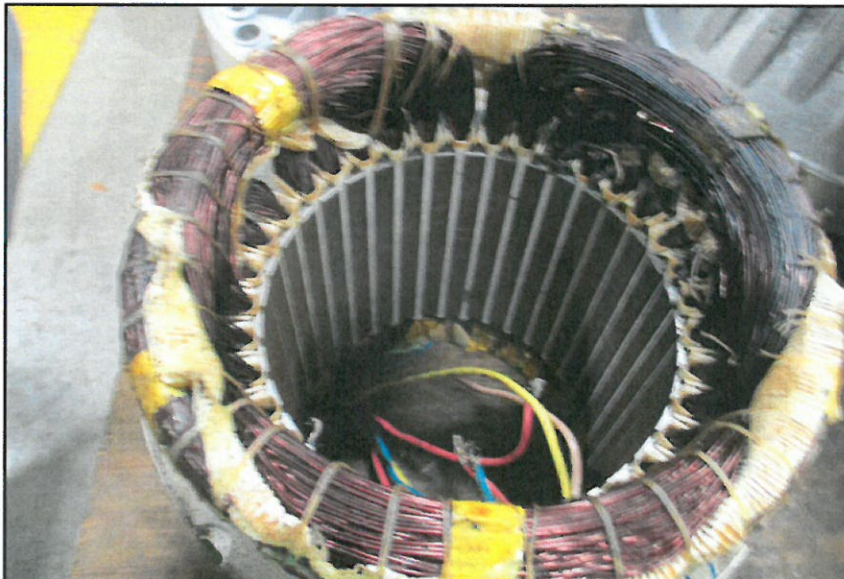
- Ceramic coat volute discharge flange to restore surface conditions and help reduce future wear.

ROTOR



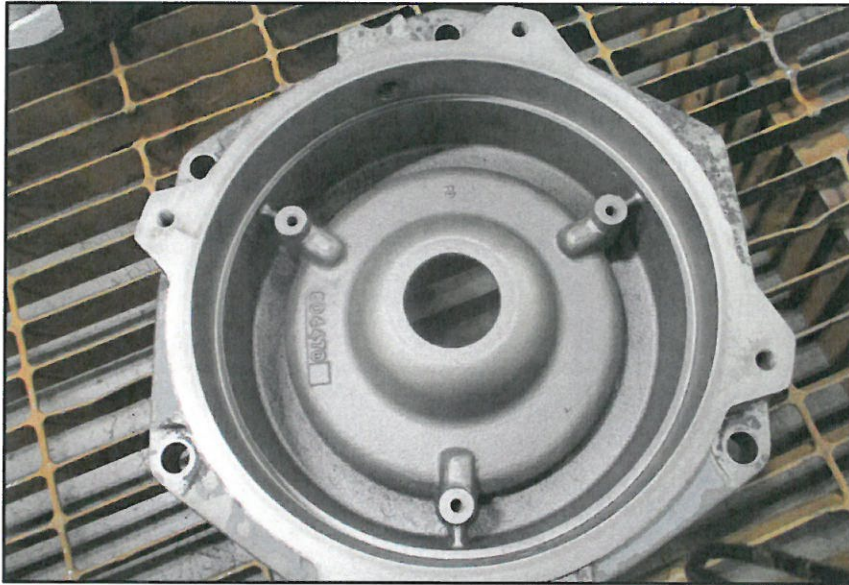
- Rotor T.I.R. is 0.001" and within specification.
- Rotor is in good condition and will be reused.

STATOR



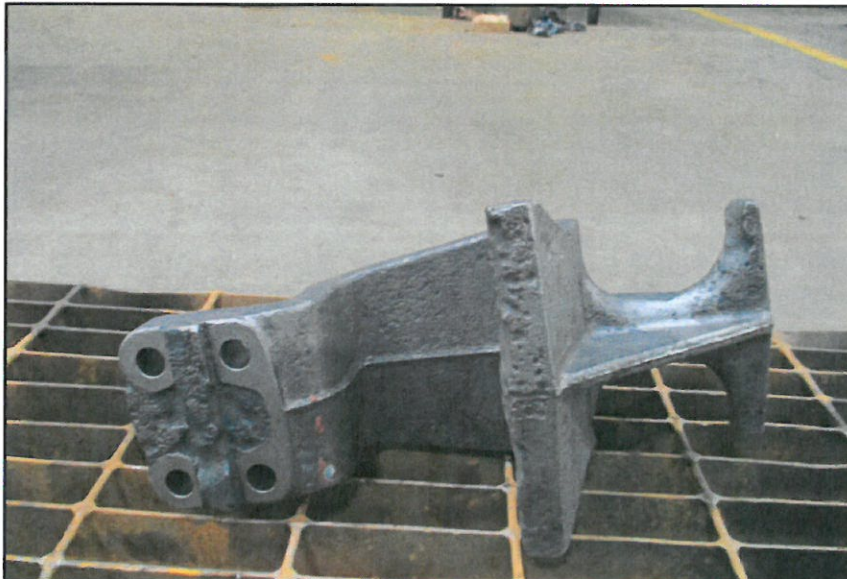
- Wash, bake, and electrical test stator.
- Stator failed all electrical testing.
- Stator will be replaced with new.

OIL HOUSING BOTTOM



- Oil housing bottom is worn at the mechanical seal fit.
- Oil housing bottom will be replaced with new.

GUIDE RAIL BRACKET



- Guide rail bracket is worn and corroded.
- Guide rail bracket will be replaced with new.