

CHARLOTTE FIRE DEPARTMENT

FIRE RUN TOTALS

	2013			2014			2015			2016			2017			2018		
	RUNS	YEAR		RUNS	YEAR		RUNS	YEAR		RUNS	YEAR		RUNS	YEAR		RUNS	YEAR	
	THIS	TO	MONTH	THIS	TO	MONTH	THIS	TO	MONTH	THIS	TO	MONTH	THIS	TO	MONTH	THIS	TO	MONTH
JANUARY	46	--	46	56	--	56	42	--	42	46	--	46	65	--	65	67	--	67
FEBRUARY	46	--	92	28	--	84	40	--	82	60	--	106	42	--	107	55	--	122
MARCH	48	--	140	47	--	131	51	--	133	50	--	156	86	--	193	63	--	185
APRIL	54	--	194	48	--	179	59	--	192	44	--	200	47	--	240	99	--	284
MAY	63	--	257	39	--	218	54	--	246	50	--	250	59	--	299	67	--	351
JUNE	43	--	300	52	--	270	45	--	291	46	--	296	52	--	351	59	--	410
JULY	33	--	333	36	--	306	62	--	353	56	--	352	84	--	435	81	--	491
AUGUST	41	--	374	56	--	362	44	--	397	49	--	401	57	--	492	71	--	562
SEPTEMBER	37	--	411	60	--	422	54	--	451	54	--	455	81	--	573	53	--	615
OCTOBER	44	--	455	49	--	471	48	--	499	47	--	502	64	--	637	48	--	663
NOVEMBER	76	--	531	42	--	513	55	--	554	56	--	558	56	--	693	59	--	722
DECEMBER	156	--	687	53	--	566	41	--	595	55	--	613	62	--	755	50	--	772

	2018		DEVIATION FROM LAST YEAR		5 YEAR AVERAGE		DEVIATION FROM 5 YR AVERAGE		15 YEAR AVERAGE		DEVIATION FROM 15 YR AVERAGE		
	RUNS	YEAR	RUNS	YEAR	RUNS	YEAR	RUNS	YEAR	RUNS	YEAR	RUNS	YEAR	
	THIS	TO	THIS	TO	THIS	TO	THIS	TO	THIS	TO	THIS	TO	
JANUARY	67	--	67	2	2	51	51	16	16	45	45	22	22
FEBRUARY	55	--	122	13	15	43	94	12	28	41	87	14	35
MARCH	63	--	185	-23	-8	56	151	7	34	51	138	12	47
APRIL	99	--	284	52	44	50	201	49	83	46	184	53	100
MAY	67	--	351	8	52	53	254	14	97	51	235	16	116
JUNE	59	--	410	7	59	48	302	11	108	48	282	11	128
JULY	81	--	491	-3	56	54	356	27	135	57	340	24	151
AUGUST	71	--	562	14	70	49	405	22	157	46	386	25	176
SEPTEMBER	53	--	615	-28	42	57	462	-4	153	49	435	4	180
OCTOBER	48	--	663	-16	26	50	513	-2	150	48	483	0	180
NOVEMBER	59	--	722	3	29	57	570	2	152	47	530	12	192
DECEMBER	50	--	772	-12	17	73	643	-23	129	56	586	-6	186

MOST / LEAST RUNS PER MONTH 1976 THRU 2018

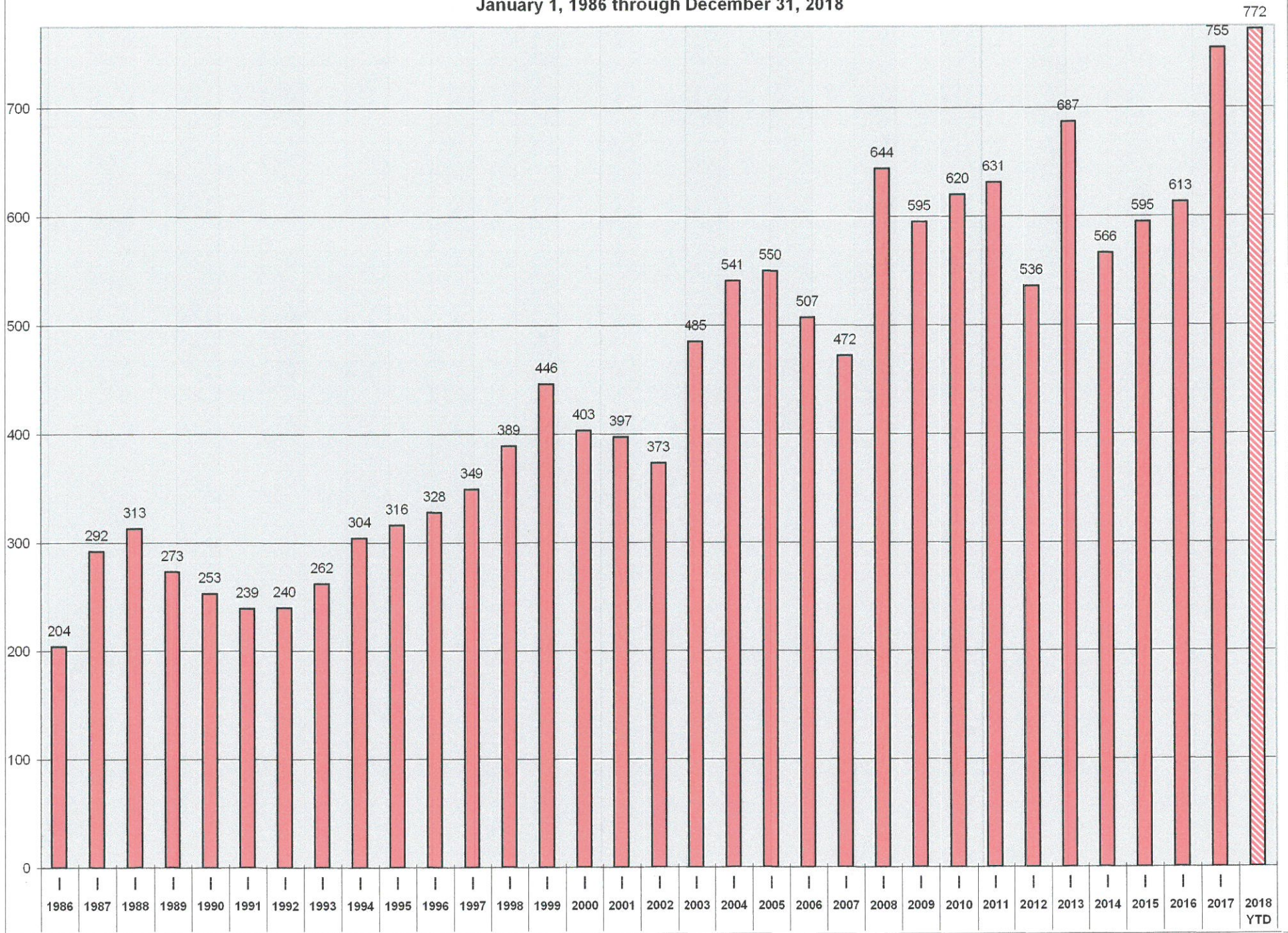
	MOST		LEAST		TOTAL		TOTAL		TOTAL	
	YEAR	RUNS	YEAR	RUNS	YEAR	RUNS	YEAR	RUNS	YEAR	RUNS
JANUARY	2018	= 67	1976	= 7	1986	= 204	1998	= 389	2010	= 620
FEBRUARY	2016	= 60	82,86	= 9	1987	= 292	1999	= 446	2011	= 631
MARCH	2017	= 86	78,80	= 15	1988	= 313	2000	= 403	2012	= 536
APRIL	2018	= 99	1983	= 10	1989	= 273	2001	= 397	2013	= 687
MAY	2004 2018	= 67	1983	= 9	1990	= 253	2002	= 373	2014	= 566
JUNE	2008	= 82	1993	= 13	1991	= 239	2003	= 485	2015	= 595
JULY	2012	= 89	1982	= 11	1992	= 240	2004	= 541	2016	= 613
AUGUST	2018	= 71	1978	= 14	1993	= 262	2005	= 550	2017	= 755
SEPTEMBER	2017	= 81	1977	= 8	1994	= 304	2006	= 507	2018 YTD	= 772
OCTOBER	2010	= 67	1985	= 6	1995	= 316	2007	= 472		
NOVEMBER	2011	= 78	1985	= 6	1996	= 328	2008	= 644		
DECEMBER	2013	= 156	1982	= 9	1997	= 349	2009	= 595		
TOTAL		1003	TOTAL	117						

Total Fire Runs since January 1, 1976 = 17238

Average per year = 401

<u>MONTH</u>	<u>RUNS</u>	<u>MONTH</u>	<u>RUNS</u>	<u>MONTH</u>	<u>RUNS</u>	<u>MONTH</u>	<u>RUNS</u>	<u>MONTH</u>	<u>RUNS</u>	<u>MONTH</u>	<u>RUNS</u>	<u>MONTH</u>	<u>RUNS</u>	<u>MONTH</u>	<u>RUNS</u>	<u>MONTH</u>	<u>RUNS</u>	<u>MONTH</u>	<u>RUNS</u>
Oct-86	8	Jan-98	19	Mar-93	24	Mar-86	29	Apr-87	35	Nov-04	40	Jun-12	45	Jan-00	53	Jul-15	62		
Feb-86	9	Feb-89	20	Aug-93	24	Jul-93	29	Dec-94	35	Feb-07	40	Jun-15	45	Dec-14	53	Dec-17	62		
Sep-91	9	Jun-89	20	Apr-98	24	Mar-94	29	Jan-02	35	Apr-07	40	Apr-01	46	Sep-18	53	Jul-05	63		
Jan-86	12	Apr-90	20	Feb-99	24	Apr-97	29	Oct-03	35	Jan-12	40	Jul-03	46	May-98	54	May-13	63		
Apr-86	12	Mar-91	20	Aug-00	24	Apr-00	29	Dec-04	35	Feb-15	40	Nov-05	46	Apr-05	54	Mar-18	63		
Jan-89	12	Feb-93	20	Jun-87	25	Jul-01	29	Feb-05	35	Oct-97	41	Oct-06	46	Sep-09	54	Oct-17	64		
Dec-90	12	May-94	20	Mar-88	25	Aug-12	29	Jun-05	35	Nov-98	41	Oct-09	46	Sep-10	54	Jan-17	65		
Jan-91	12	Apr-95	20	Nov-89	25	Nov-86	30	Oct-05	35	Jan-03	41	Apr-10	46	Mar-12	54	May-11	66		
Apr-92	12	Feb-96	20	Jan-90	25	Apr-94	30	Mar-08	35	Mar-05	41	Jan-13	46	Apr-13	54	May-04	67		
Sep-87	13	Nov-97	20	Jan-94	25	Aug-99	30	Nov-09	35	Aug-10	41	Feb-13	46	Apr-15	54	Oct-10	67		
Dec-88	13	Dec-97	20	Sep-94	25	Sep-01	30	Jan-10	35	Aug-13	41	Jan-16	46	Sep-15	54	Jul-11	67		
Feb-91	13	Feb-98	20	Aug-95	25	Jul-02	30	Feb-11	35	Dec-15	41	Jun-16	46	Sep-16	54	Jan-18	67		
Dec-91	13	Nov-02	20	Oct-95	25	Sep-07	30	Nov-12	35	Oct-99	42	Aug-09	47	May-99	55	May-18	67		
Jun-93	13	Feb-87	21	Jun-96	25	Mar-95	31	Dec-96	36	May-00	42	Nov-10	47	Aug-05	55	Mar-09	68		
Jul-86	14	Aug-87	21	Jul-96	25	Aug-97	31	Mar-99	36	Jun-02	42	Sep-12	47	Jul-06	55	Sep-08	69		
Nov-92	14	Mar-89	21	May-97	25	Sep-99	31	Oct-00	36	Dec-03	42	Mar-14	47	Aug-11	55	Jul-08	70		
Jun-86	15	Jul-89	21	Sep-97	25	Dec-99	31	May-07	36	Feb-06	42	Oct-16	47	Nov-15	55	Jul-10	70		
Jan-87	15	Oct-89	21	Feb-00	25	Oct-01	31	Jul-14	36	Jun-06	42	Apr-17	47	Dec-16	55	Aug-18	71		
Oct-88	15	Aug-90	21	Feb-02	25	Dec-01	31	Oct-96	37	Aug-06	42	Dec-08	48	Feb-18	55	Nov-13	76		
Aug-92	15	Oct-90	21	Sep-02	25	Mar-02	31	Jun-99	37	Dec-07	42	Mar-13	48	May-03	56	Nov-11	78		
Nov-93	15	Jan-92	21	May-87	26	Jun-04	31	Feb-03	37	Aug-08	42	Apr-14	48	Aug-07	56	Sep-17	81		
May-86	16	May-92	21	Apr-91	26	Sep-04	31	Nov-03	37	Apr-11	42	Oct-15	48	Jan-14	56	Jul-18	81		
Aug-86	16	Oct-93	21	Oct-92	26	Feb-10	31	Jun-07	37	Nov-14	42	Oct-18	48	Aug-14	56	Jun-08	82		
Sep-88	16	Aug-94	21	Dec-92	26	Jun-92	32	Jul-07	37	Jan-15	42	Jan-09	49	Jul-16	56	Jul-17	84		
Jun-91	16	Oct-94	21	Jun-97	26	Jun-95	32	Sep-13	37	Feb-17	42	May-09	49	Nov-16	56	Mar-17	86		
Sep-96	16	Aug-96	21	Dec-98	26	Jul-98	32	May-89	38	Aug-01	43	Dec-09	49	Nov-17	56	Jul-12	89		
Oct-87	17	Dec-89	22	Feb-01	26	Aug-98	32	Mar-00	38	Jan-04	43	Dec-12	49	Apr-09	57	Apr-18	99		
Nov-87	17	Mar-90	22	Mar-01	26	Sep-98	32	Sep-00	38	Mar-07	43	Oct-14	49	Mar-10	57	Dec-13	156		
May-91	17	Dec-93	22	Nov-01	26	Apr-99	32	Jun-01	38	Jul-09	43	Aug-16	49	Oct-11	57				
Feb-92	17	Mar-98	22	Nov-06	26	Jun-00	32	Aug-04	38	Sep-11	43	Feb-04	50	Aug-17	57				
Feb-88	18	Aug-02	22	Aug-89	27	Dec-00	32	Jan-05	38	Jun-13	43	Jul-04	50	Mar-97	58				
May-88	18	Dec-87	23	Aug-91	27	May-01	32	Sep-06	38	Nov-99	44	Mar-16	50	Dec-10	58				
Sep-89	18	May-90	23	Mar-96	27	Dec-02	32	Oct-07	38	May-02	44	May-16	50	Dec-11	58				
Oct-91	18	Sep-90	23	Jul-00	27	May-06	32	Oct-12	38	Jun-03	44	Dec-18	50	Jun-98	59				
Jul-92	18	Nov-91	23	Nov-00	27	Apr-93	33	Jul-87	39	Dec-05	44	Jul-99	51	Oct-04	59				
Feb-95	18	Sep-93	23	Sep-03	27	Jun-94	33	Jan-01	39	Jun-11	44	Dec-06	51	Sep-05	59				
Dec-95	18	Feb-94	23	Apr-06	27	Jan-99	33	Jan-07	39	Feb-12	44	Oct-08	51	May-08	59				
Sep-86	19	Jul-94	23	Aug-88	28	Apr-02	33	Nov-08	39	Oct-13	44	Mar-15	51	Jun-09	59				
Jun-90	19	Jan-95	23	Apr-89	28	Apr-12	33	Feb-09	39	Aug-15	44	Mar-04	52	Apr-15	59				
Nov-90	19	Feb-97	23	May-95	28	May-12	33	May-14	39	Apr-16	44	Feb-08	52	May-17	59				
Mar-92	19	Jul-97	23	Jul-95	28	Jul-13	33	Mar-87	40	Jul-88	45	Apr-08	52	Jun-18	59				
Sep-92	19	Dec-86	24	Nov-95	28	Apr-88	34	Sep-95	40	Jul-91	45	May-10	52	Nov-18	59				
Jan-93	19	Jan-88	24	Jan-96	28	May-96	34	Apr-96	40	Apr-04	45	Jan-11	52	Sep-14	60				
May-93	19	Nov-88	24	Jan-97	28	Oct-02	34	Mar-03	40	May-05	45	Jun-14	52	Feb-16	60				
Nov-94	19	Feb-90	24	Oct-98	28	Nov-07	34	Apr-03	40	Jan-06	45	Jun-17	52	Mar-06	61				
Nov-96	19	Jul-90	24	Feb-14	28	Mar-11	34	Aug-03	40	Jan-08	45	Jun-88	53	Jun-10	62				

CHARLOTTE FIRE DEPARTMENT
TOTAL FIRE RUNS PER YEAR
January 1, 1986 through December 31, 2018



CHARLOTTE FIRE DEPARTMENT

HISTORY OF TOTAL RUNS BY YEAR

HISTORY OF HIGHEST / LOWEST NUMBER OF RUNS

HISTORY OF LOWEST / HIGHEST NUMBER OF RUNS BY INDIVIDUAL MONTHS

YEAR	TOTAL RUNS	NUMBER			MONTH	LOWEST	HIGHEST
		MONTH / YEAR	OF RUNS	MOST / LEAST			
1976	217	Dec-13	156	Most	JANUARY	7	67
1977	247	Apr-18	99	Most	FEBRUARY	9	60
1978	242	Jul-12	89	Most	MARCH	15	86
1979	197	Mar-17	86	Most	APRIL	10	99
1980	272	Jun-08	82	Most	MAY	9	67
1981	237	Sep-17	81	Most	JUNE	13	82
1982	185	Nov-11	78	Most	JULY	11	89
1983	185	Aug-18	71	Most	AUGUST	14	71
1984	283	May-04, May-18	67	Most	SEPTEMBER	8	81
1985	224	Oct-10	67	Most	OCTOBER	6	67
1986	204	Jan-18	67	Most	NOVEMBER	6	78
1987	292	Feb-16	60	Most	DECEMBER	9	156
1988	313	Mar-80	15	Least			
1989	273	Mar-78	15	Least			
1990	253	Aug-78	14	Least			
1991	239	Jun-93	13	Least			
1992	240	Jul-82	11	Least			
1993	262	Apr-83	10	Least			
1994	304	Feb-86	9	Least			
1995	316	May-83	9	Least			
1996	328	Dec-82	9	Least			
1997	349	Feb-82	9	Least			
1998	389	Sep-77	8	Least			
1999	446	Jan-76	7	Least			
2000	403	Nov-85	6	Least			
2001	397	Oct-85	6	Least			
2002	373						
2003	485						
2004	541						
2005	550						
2006	507						
2007	472						
2008	644						
2009	595						
2010	620						
2011	631						
2012	536						
2013	687						
2014	566						
2015	595						
2016	613						
2017	755						
2018 YTD	772						

CHARLOTTE FIRE DEPARTMENT

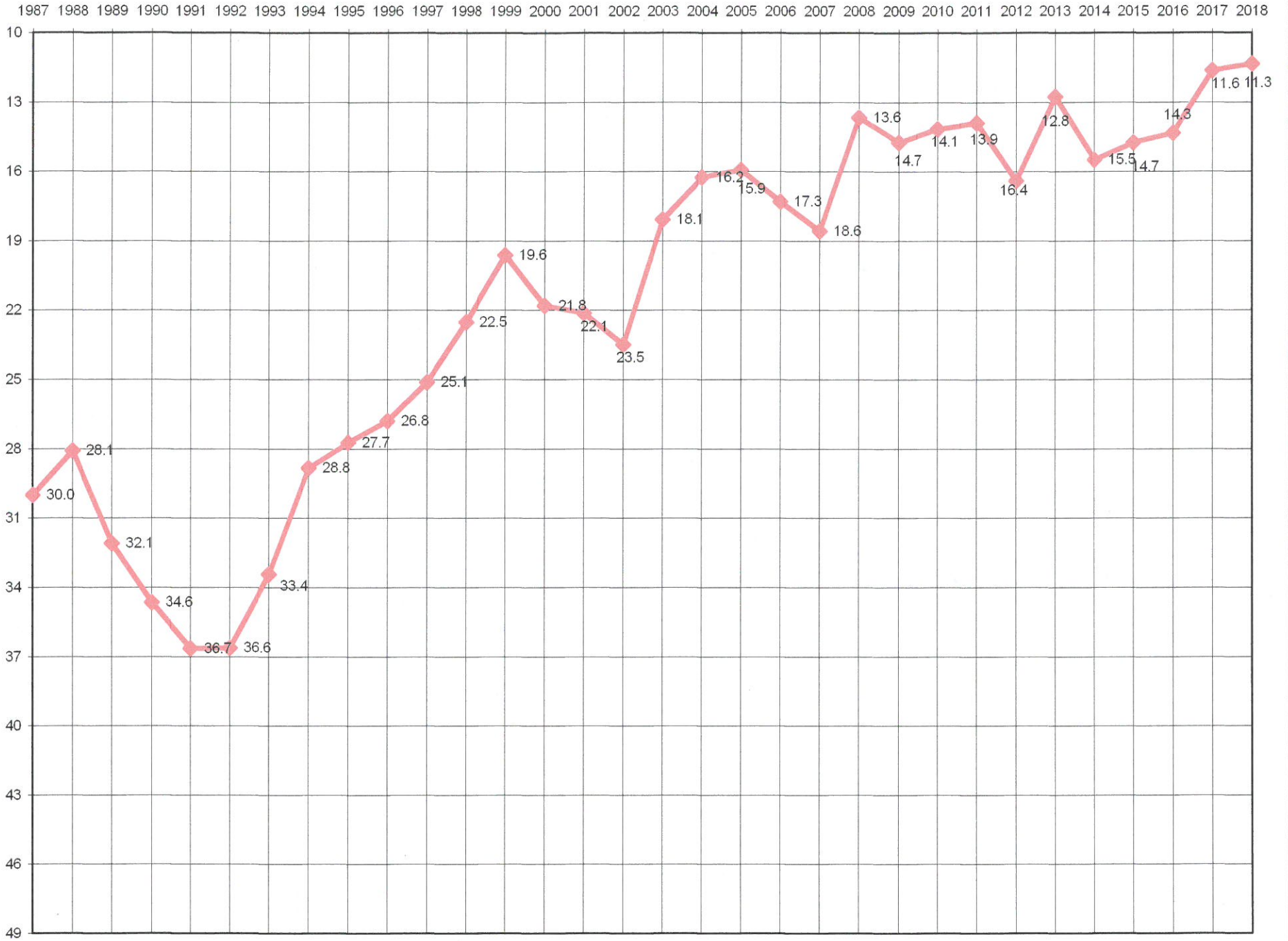
HISTORY OF TOTAL RUNS BY YEAR

YEAR	TOTAL RUNS	ON AVERAGE A RUN EVERY	
		HOURS	DAYS
1976	217	40.5	1.7
1977	247	35.5	1.5
1978	242	36.2	1.5
1979	197	44.5	1.9
1980	272	32.3	1.3
1981	237	37.0	1.5
1982	185	47.4	2.0
1983	185	47.4	2.0
1984	283	31.0	1.3
1985	349	25.1	1.0
1986	204	42.9	1.8
1987	292	30.0	1.3
1988	313	28.1	1.2
1989	273	32.1	1.3
1990	253	34.6	1.4
1991	239	36.7	1.5
1992	240	36.6	1.5
1993	262	33.4	1.4
1994	304	28.8	1.2
1995	316	27.7	1.2
1996	328	26.8	1.1
1997	349	25.1	1.0
1998	389	22.5	0.9
1999	446	19.6	0.8
2000	403	21.8	0.9
2001	397	22.1	0.9
2002	373	23.5	1.0
2003	485	18.1	0.8
2004	541	16.2	0.7
2005	550	15.9	0.7
2006	507	17.3	0.7
2007	472	18.6	0.8
2008	644	13.6	0.57
2009	595	14.7	0.61
2010	620	14.1	0.59
2011	631	13.9	0.58
2012	536	16.4	0.68
2013	687	12.8	0.53
2014	566	15.5	0.64
2015	595	14.7	0.61
2016	613	14.3	0.60
2017	755	11.6	0.48
2018 YTD	772	11.3	0.47

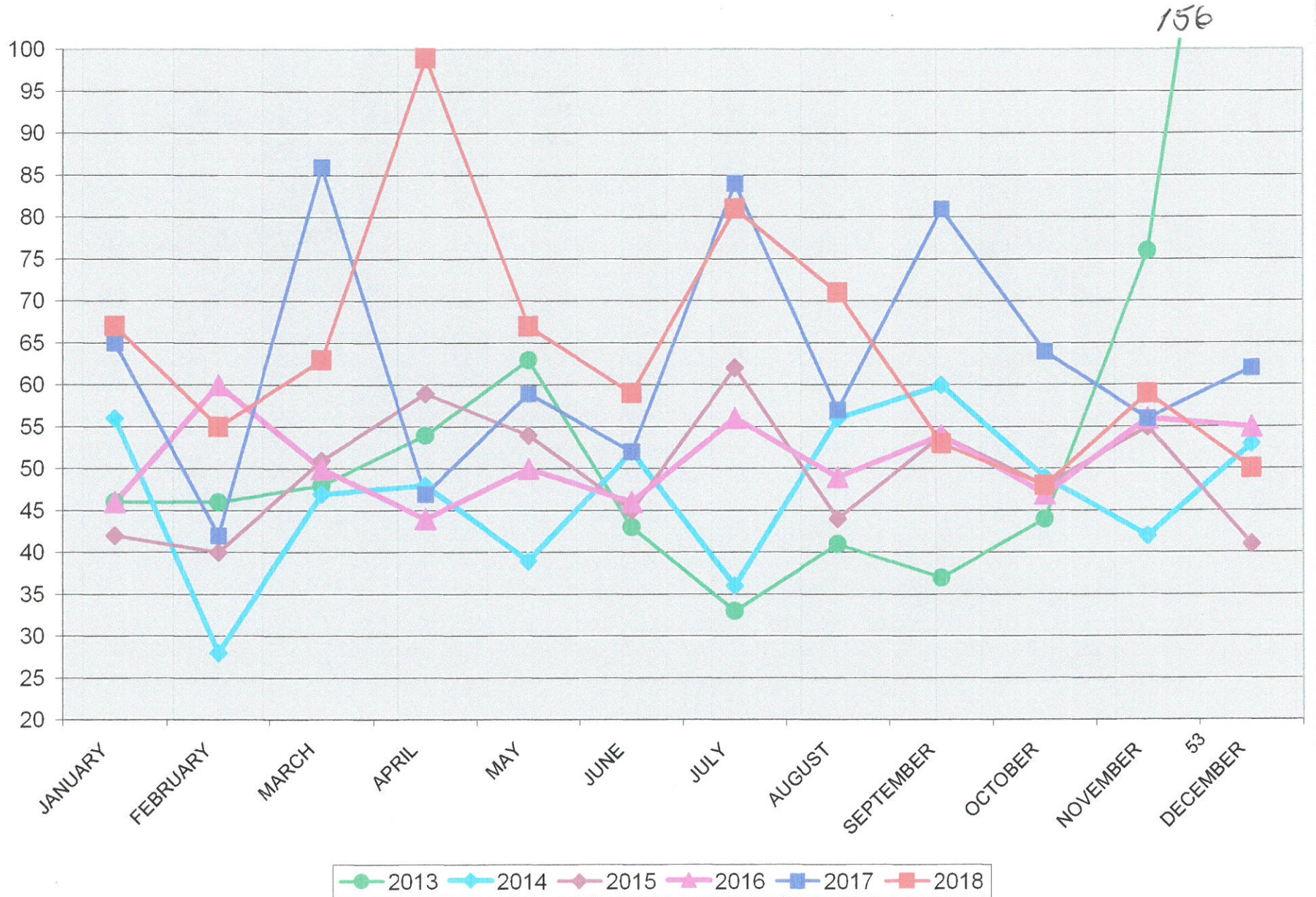
HISTORY OF HIGHEST / LOWEST NUMBER OF RUNS

MONTH / YEAR	NUMBER OF RUNS	ON AVERAGE A RUN EVERY		RUNS PER DAY
		HOURS	DAYS	
Dec-13	156	4.8	0.20	5.032
Apr-18	99	7.3	0.30	3.300
Jul-12	89	8.4	0.35	2.871
Mar-17	86	8.7	0.36	2.774
Jun-08	82	8.8	0.37	2.733
Sep-17	81	8.9	0.37	2.700
Nov-11	78	9.2	0.38	2.600
Aug-18	71	10.5	0.44	2.290
May-04, May-18	67	11.1	0.46	2.161
Oct-10	67	11.1	0.46	2.161
Jan-18	67	11.1	0.46	2.161
Feb-16	60	11.6	0.48	2.069
Mar-80	15	49.6	2.07	0.484
Mar-78	15	49.6	2.07	0.484
Aug-78	14	53.1	2.21	0.452
Jun-93	13	55.4	2.31	0.433
Jul-82	11	67.6	2.82	0.355
Apr-83	10	72.0	3.00	0.333
Feb-86	9	74.7	3.11	0.321
Feb-82	9	74.7	3.11	0.321
May-83	9	82.7	3.44	0.290
Dec-82	9	82.7	3.44	0.290
Sep-77	8	90.0	3.75	0.267
Jan-76	7	106.3	4.43	0.226
Nov-85	6	120.0	5.00	0.200
Oct-85	6	124.0	5.17	0.194
2018	RUNS	HOURS	DAYS	RUNS PER DAY
JANUARY	67	11.1	0.463	2.161
FEBRUARY	55	12.7	0.527	1.897
MARCH	63	11.8	0.492	2.032
APRIL	99	7.3	0.303	3.300
MAY	67	11.1	0.463	2.161
JUNE	59	12.2	0.508	1.967
JULY	81	9.2	0.383	2.613
AUGUST	71	10.5	0.437	2.290
SEPTEMBER	53	13.6	0.566	1.767
OCTOBER	48	15.5	0.646	1.548
NOVEMBER	59	12.2	0.508	1.967
DECEMBER	50	14.9	0.620	1.613

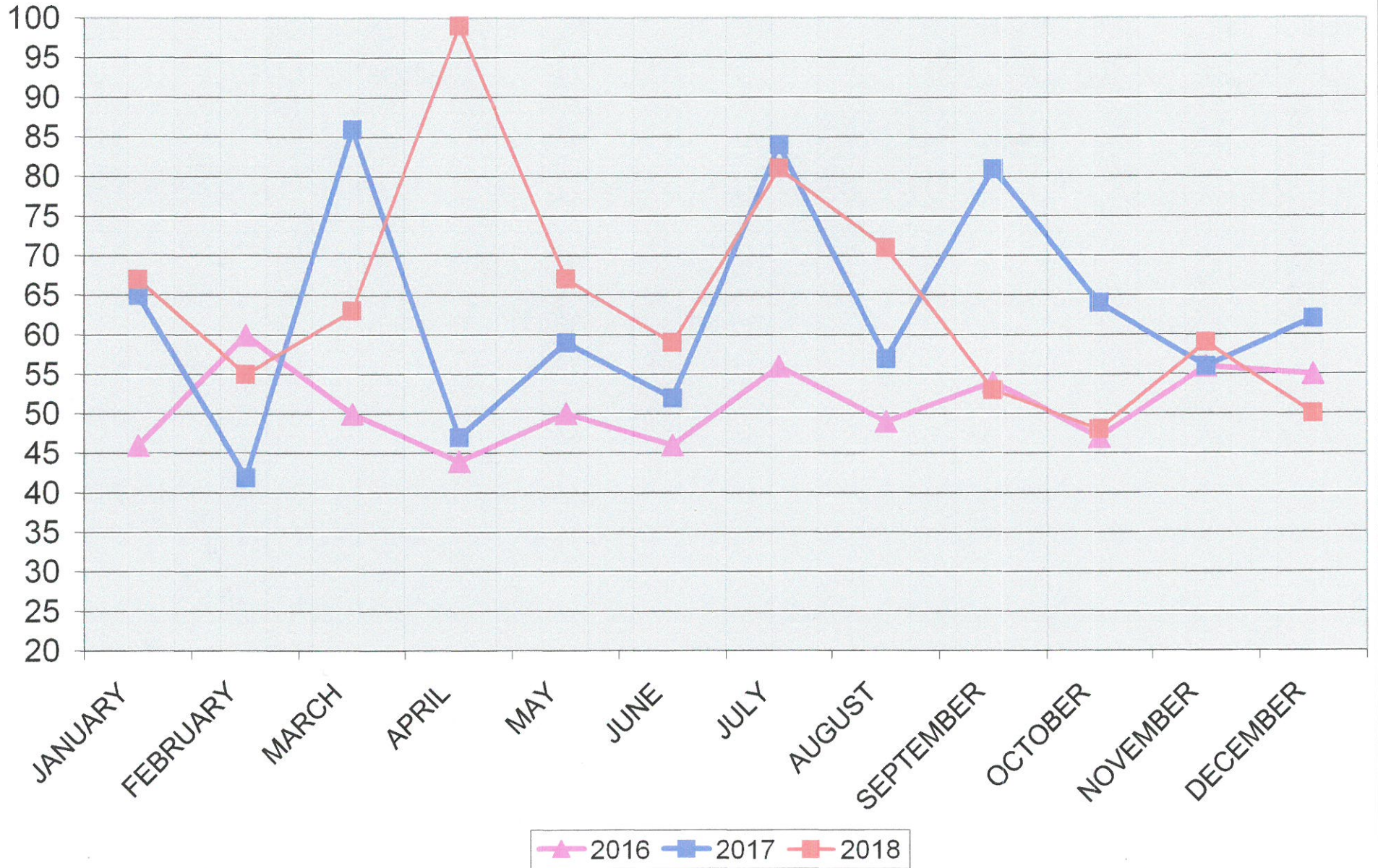
ON AVERAGE ONE FIRE RUN EVERY ___ HOURS



Comparing Runs per Month - 2013 through 2018



Comparing Runs per Month - 2016, 2017, 2018



Just Notes ----

2018 -- 772 Total runs -- Most ever -- 17 more than last year.

**December 2018 -- 50 runs total - Second slowest month for the year.
October had 48**

**December 2018 -- 50 runs total -- 12 less than Dec 2017
23 less than 5 year average
6 less than 15 year average**

2018 -- 4 Months with most runs ever for a month

January 67 runs

April 99 runs

May 67 runs Tie with May of 2004

August 71 runs