

PROJECT DESCRIPTION
 INSTALLATION OF ANTENNAS, MICROWAVE DISHES, COAXIAL CABLE, AND ASSOCIATED MOUNTS ON AN NEW 160' SELF-SUPPORT TOWER. INSTALLATION OF RACKS AND CABLE LADDER IN AN EXISTING EQUIPMENT ROOM.
 NO WATER SUPPLY OR SEWAGE TO/FROM THE SITE.

SITE NAME:
 DISPATCH

SITE ADDRESS:
 911 COURTHOUSE DRIVE
 CHARLOTTE, MI 48813
 EATON COUNTY

SITE COORDINATES AND ELEVATION
 NAD 83
 LATITUDE - W 84° 50' 56.73"
 LONGITUDE - W 84° 50' 56.73"
 GRID ELEV. - ±940' AMSL

SITE INFORMATION

LANDLORD:
 COUNTY OF EATON

APPLICANT:
 EATON COUNTY CENTRAL DISPATCH

CONTACT:
 MOTOROLA SOLUTIONS
 PH: (989) 710-1062

PROJECT MANAGER:
 TREN'T OSLING
 PH: (269) 998-3364

ARCHITECTURAL AND ENGINEERING
 MISSION 1 COMMUNICATIONS
 SCOTT HARTMAN
 10000 WOODLAND DRIVE, SUITE C
 EAST WALKER IN CHARLOTTE, MI 48813
 PH: (260) 410-0852

CONSULTANT TEAM

EATON COUNTY REPRESENTATIVE:	RECEIVED..
MOTOROLA..	ACCEPTED..
PROPERTY OWNER:	RECEIVED..
RECEIVED AND ACCEPTED	ACCEPTED..



DIRECTIONS TO SITE

E 08-10-18	CD REVIEW SET	RFI SAH
D 07-27-18	NEW TOWER LOCATION	SAH SAH
C 02-19-18	REVISED TOWER ELEVATION	RFI SAH
B 02-19-18	ISSUED FOR REVIEW	RFI SAH
A 12-05-17	ISSUED FOR REVIEW	RFI SAH
NO. DATE	REVISIONS	BY (CHK) (APP'D)

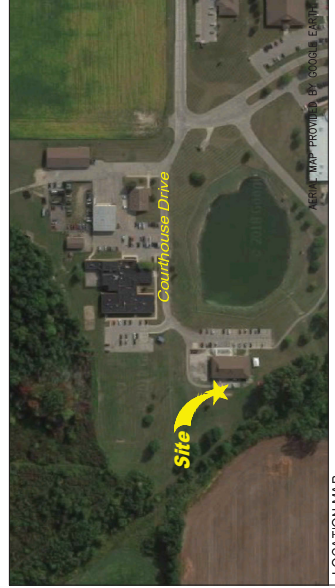
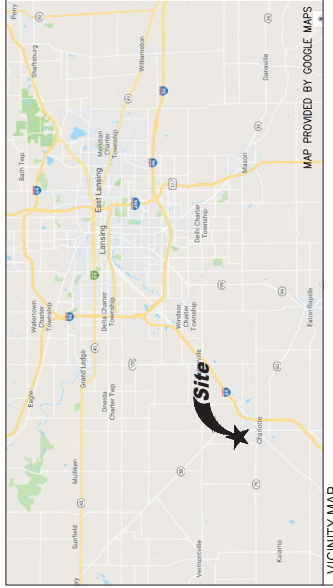
DISPATCH

911 COURTHOUSE DRIVE
 CHARLOTTE, MI 48813
 EATON COUNTY



DRAWING INDEX

- T-1 PROJECT INFORMATION, LOCATION MAPS, AND DRAWING INDEX
- GN-1 GENERAL NOTES
- GN-2 GENERAL NOTES AND LEGEND
- C-1 SITE LOCATION PLAN
- C-2 OVERALL SITE PLAN
- C-3 TOWER ELEVATION AND ANTENNA INFORMATION
- C-4 ANTENNA INFORMATION
- C-5 ANTENNA INFORMATION
- C-6 ICE BRIDGE DETAILS
- C-7 FENCE DETAILS
- A-1 EXISTING EQUIPMENT ROOM PLAN
- A-2 PROPOSED EQUIPMENT ROOM PLAN
- A-3 PROPOSED REFLECTIVE CEILING PLAN
- A-3-1 LADDER RACK DETAILS
- A-4 ENTRY PANEL DETAIL
- A-5 EQUIPMENT RACK DIAGRAM
- E-1 SITE GROUNDING PLAN
- E-2 GROUNDING SCHEMATIC AND NOTES
- E-3 EQUIPMENT ROOM GROUNDING PLAN
- E-4 GROUNDING DETAILS
- E-5 GROUNDING DETAILS

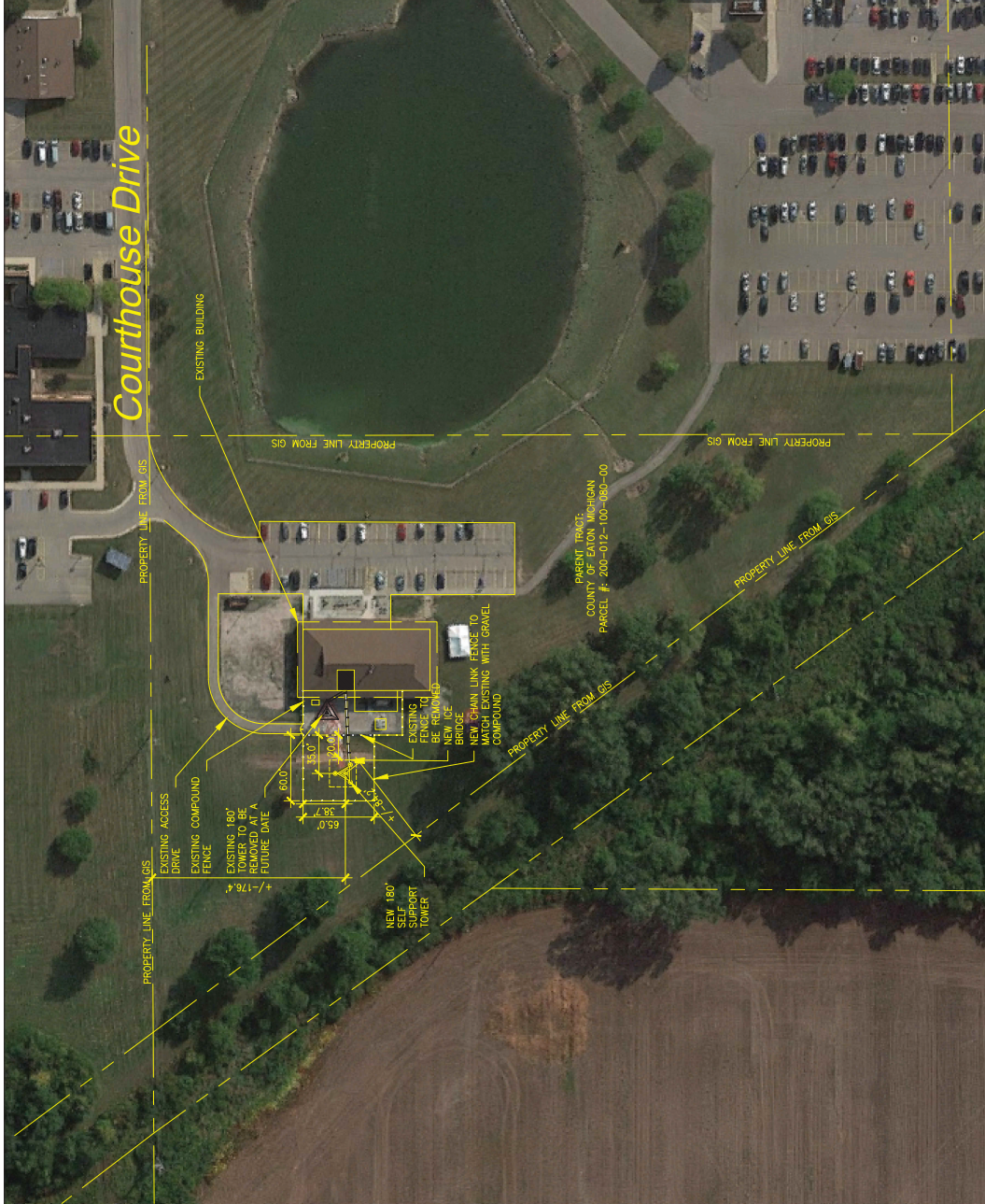


THIS DRAWING IS CONSIDERED VOID IF NOT USED SOLELY FOR USE BY THE OWNER AND ITS AFFILIATES. THE INFORMATION CONTAINED HEREIN IS FORBIDDEN WITHOUT THE WRITTEN PERMISSION OF THE OWNER. UNLESS THE DRAWING IS MADE UNDER THE DIRECTION OF A LICENSED PROFESSIONAL ENGINEER, TO ALTER THIS DOCUMENT.

PRELIMINARY
 NOT FOR
 CONSTRUCTION

PROJECT INFORMATION, LOCATION MAPS, AND DRAWING INDEX	T-1
DISPATCH	PRINTED AT 24x36
911 COURTHOUSE DRIVE CHARLOTTE, MI 48813	





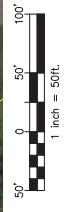
- GENERAL NOTES:**
- PROPERTY OFFSETS ARE APPROXIMATE. FINAL LOCATION OF COMPOUND TO BE DEVELOPED FROM TOWER ☐.
 - PROPERTY LINES SHOWN ARE BASED ON A MAP FROM THE EATON COUNTY GEOGRAPHIC INFORMATION SYSTEM (GIS) AND AERIAL PHOTOS. THE PROPERTY LINES ARE NOT TO BE USED IN PLACE OF A SURVEY AND DEEDS, BUT ARE SHOWN FOR REFERENCE ONLY.
 - THE LOCATION, SIZE, & TYPE OF MATERIAL OF EXISTING UTILITIES INDICATED ON THE PLANS IS NOT REPRESENTED AS BEING ACCURATE. SUFFICIENT OR IMPROPER INFORMATION IS THE CONTRACTOR'S RESPONSIBILITY TO DETERMINE THE LOCATION OF ALL SUCH FACILITIES, INCLUDING THE SERVICE CONNECTIONS TO UNDERGROUND UTILITIES. PRIOR TO UNDERGROUNDING UTILITIES, THE CONTRACTOR SHALL NOTIFY THE UTILITY COMPANIES CONCERNED. THE CONTRACTOR SHALL OBTAIN FROM THE RESPECTIVE UTILITY COMPANIES DETAILED INFORMATION & ASSISTANCE RELATIVE TO THE LOCATION OF THEIR FACILITIES & THE LOCATION OF ANY CHANGES TO BE MADE. REMOVAL OR ADJUSTMENT WHERE REQUIRED, IN THE EVENT AN UNEXPECTED UTILITY INTERFERENCE IS ENCOUNTERED DURING CONSTRUCTION, THE CONTRACTOR SHALL BE RESPONSIBLE FOR NOTIFYING THE COMPANY OF JURISDICTION. THE ENGINEER SHALL ALSO BE IMMEDIATELY NOTIFIED. ANY SUCH MAINS & SERVICES SHALL BE RESORTED TO SERVICE AT ONCE. THE CONTRACTOR SHALL BE RESPONSIBLE FOR THE COST TO THE CONTRACT.
 - ALL PROPOSED CONSTRUCTION ACTIVITIES & MODIFICATIONS SHALL COMPLY WITH MOTOROLA R-56 STANDARDS, MOST CURRENT EDITION.

ANY DISCREPANCIES BETWEEN THIS DRAWING AND EXISTING FIELD CONDITIONS MUST BE REPORTED TO THE ENGINEER OF RECORD PRIOR TO THE COMMENCEMENT OF CONSTRUCTION.

PRELIMINARY
NOT FOR
CONSTRUCTION

THE DRAWING IS CONSIDERED VOID IF THE USER SOLELY FOR USE BY THE OWNER AND ITS AFFILIATES. THE INFORMATION CONTAINED HEREIN IS FORBIDDEN WITHOUT THE WRITTEN PERMISSION OF THE OWNER. UNLESS THEY TAKE ACTION UNDER THE DIRECTION OF A LICENSED PROFESSIONAL ENGINEER, TO ALTER THIS DOCUMENT.

SITE PLANS ARE APPROXIMATE AND ARE TO BE REVISED AFTER SURVEY IS RECEIVED.



Site Location Plan



NO.	DATE	REVISIONS	BY	CHK	APP'D
E	08-10-18	CD REVIEW SET	SAH		
D	07-27-18	NEW TOWER LOCATION	SAH	SAH	
C	02-19-18	REVISED TOWER ELEVATION	ARF	SAH	
B	02-19-18	ISSUED FOR REVIEW	ARF	SAH	
A	12-05-17	ISSUED FOR REVIEW	ARF	SAH	

SITE LOCATION PLAN
DISPATCH
911 COURTHOUSE DRIVE
CHARLOTTE, MI 48813

PRINTED AT
24x36

C-1

