

MEDICAID IN EATON COUNTY

WHAT DOES IT MEAN FOR OUR COMMUNITY?



Barry-Eaton
District
Health
Department

WHAT IS MEDICAID?

- Medicaid is the nation's public health insurance program for people with low income. Most enrollees lack access to other affordable health insurance.
- Medicaid covers a broad array of health services and limits enrollee out-of-pocket costs.
- Medicaid is the principal source of long-term care coverage for Americans.
- In Michigan, Medicaid is managed by the State of Michigan and is funded by the state (27%) and federal (73%) governments.
- This report contains the most current publicly available data, as of August 24, 2017.

WHO DOES MEDICAID HELP?

Medicaid provides health coverage to over 70 million Americans¹, or 1 in 5, including:



**PREGNANT
WOMEN**



CHILDREN



**PEOPLE WITH
DISABILITIES**

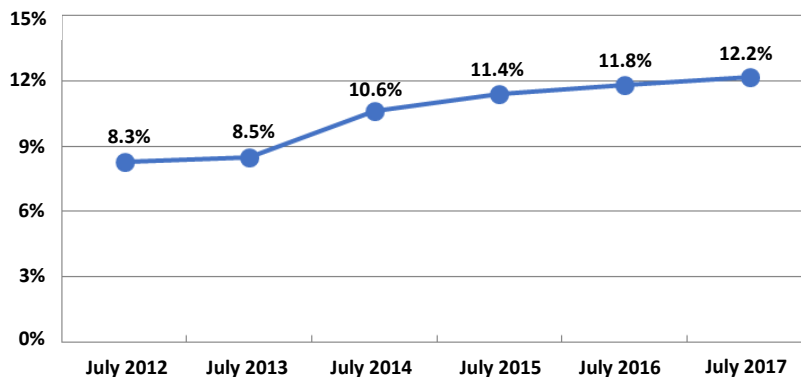


**ELDERLY
ADULTS**



**LOW-INCOME
ADULTS**

PERCENTAGE OF EATON COUNTY POPULATION ENROLLED IN MEDICAID, INCLUDING HEALTHY MICHIGAN²

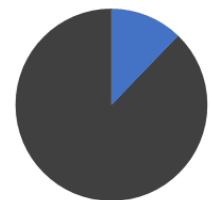


Enrollment by Eaton County residents in Medicaid and related Healthy Michigan insurance programs has increased since 2012. The first Market-place Enrollment and related Medicaid program changes were in October 2013.

1. Kaiser Family Foundation. <https://goo.gl/Nise3k> 2. Michigan Department of Health and Human Services; U.S. Census Bureau

DID YOU KNOW?

As of July 2017,
Medicaid covers 13,301,
or 12.2%, of Eaton
County residents¹



Medicaid paid for 38%
of births in Eaton
County in 2015²



Medicaid is the
primary payer for 60%
of Michigan residents
in nursing facilities³



WHAT IS THE IMPACT OF MEDICAID?

As the nation's single largest insurer, Medicaid provides significant financing for most aspects of the medical and health industry, including:

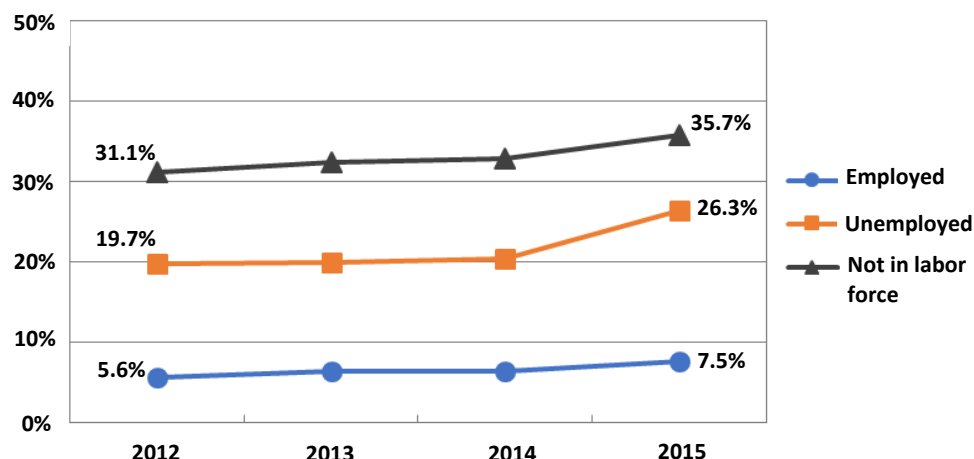
- Community health centers, including those based at schools, local health departments, tribal lands, and in rural areas
- Hospitals and surgical centers
- Doctors, dentists, and other medical care providers
- Nursing homes, home health, and hospice
- Jobs in the health care sector
- Medical transportation
- Mental health and substance abuse providers



1. Michigan Dept of Health and Human Services; U.S. Census Bureau
2. Michigan Dept of Health and Human Services
3. University of California, San Francisco and Kaiser Family Foundation. <https://goo.gl/cFUBva>

MEDICAID IN EATON COUNTY - BY THE NUMBERS

PERCENTAGE OF EATON COUNTY ADULTS 18-64 YEARS OF AGE WITH PUBLIC HEALTH CARE COVERAGE



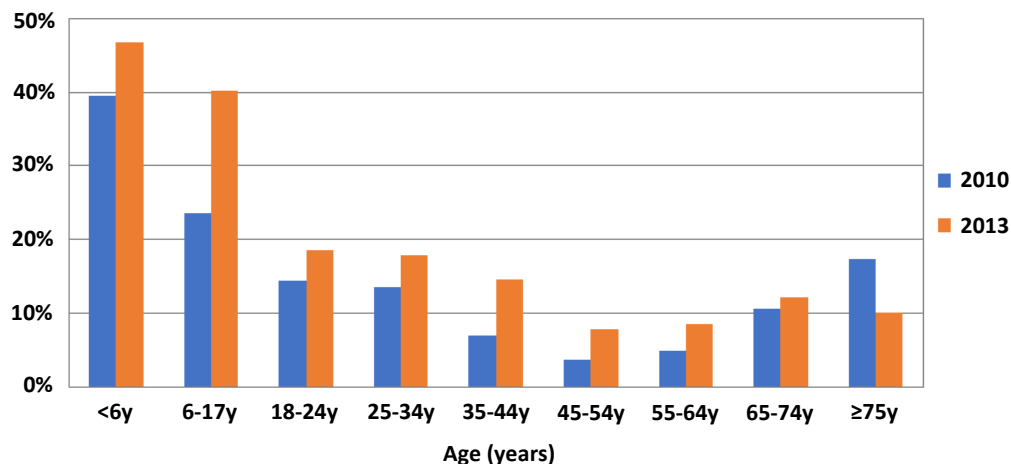
Public health care coverage, which includes Medicaid, Medicare, and the Healthy Michigan program, is an important safety net for adults who could not otherwise afford health insurance. The highest rates of public health care coverage in Eaton County adults are in those who are unemployed or not in the labor force (disabled and/or retired). It is important to note that public health care also covers some adults who are employed.

Source: U.S. Census Bureau, 2008-2015 American Community Survey 5-Year Estimates

PERCENTAGE OF EATON COUNTY POPULATION WITH MEDICAID COVERAGE, BY AGE, 2010 VS. 2013

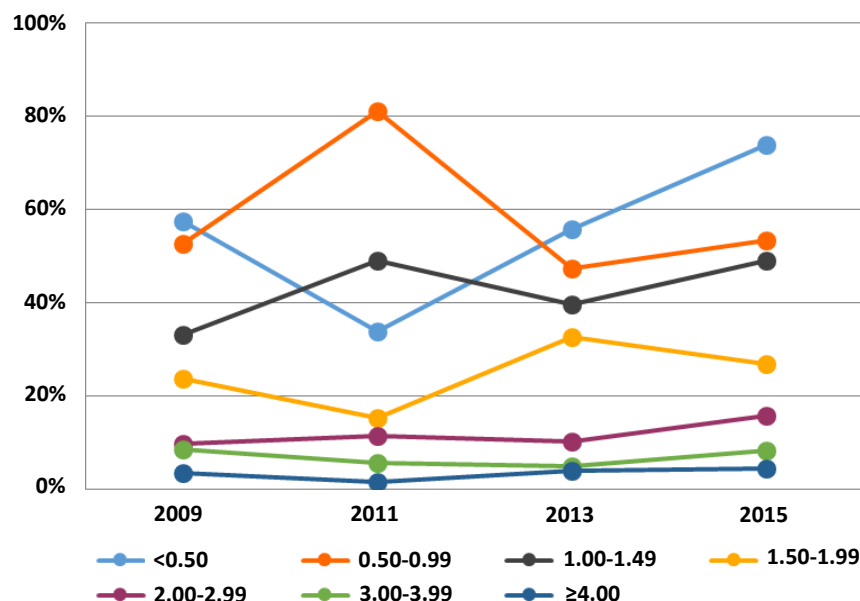
People of all ages benefit from Medicaid coverage. From 2010 to 2013, enrollment increased in all age groups except the ≥ 75 year age group. The 6-17 year and 35-44 year age groups had the largest increases.

Medicaid provides health care for vulnerable populations, such as children and the elderly. In 2013, 34.6% of children less than 18 years were on Medicaid.



Source: U.S. Census Bureau, 2008-2010 and 2011-2013 American Community Survey 3-Year Estimates

PERCENTAGE OF EATON COUNTY POPULATION COVERED BY MEDICAID, BY INCOME TO POVERTY THRESHOLD RATIO



The ratio of a family's income to the poverty threshold is a measure of financial stability. A ratio of less than 1.00 indicates an income below the poverty level, while a ratio higher than 1.00 indicates an income above the poverty level.

Eaton County residents of all incomes are helped by Medicaid. However, more Eaton County residents with low incomes, such as those with income to poverty ratios of 1.49 or less, are on Medicaid than those with higher incomes. The percentage of residents with income to poverty ratios of <0.50 and 1.00-1.49 who are covered by Medicaid has increased since 2009.

Source: U.S. Census Bureau, 2009-2015 American Community Survey 1-Year Estimates