

1 FLOOR PLAN
 A2.1 SCALE: 1/4" = 1'-0"

GENERAL NOTES

1. UNLESS NOTED OTHERWISE, ALL EXTERIOR DIMENSIONS ARE TO FACE OF SHEATHING.
2. UNLESS NOTED OTHERWISE, ALL INTERIOR DIMENSIONS ARE TO FACE OF STUD.
3. REFER TO DRAWINGS AND SPECIFICATIONS PREPARED BY EQUIPMENT SUPPLIERS AND MECHANICAL SUPPLIER FOR THEIR UNIQUE REQUIREMENTS. ALL MATERIALS ARE TO BE INSTALLED ACCORDING TO THE MANUFACTURER'S SPECIFICATIONS AND RECOMMENDATIONS.

FLOOR PLAN NOTES

1. GENERAL CONTRACTOR TO PROVIDE AND INSTALL 2x8 HORIZONTAL WOOD BLOCKING (LET IN) TO STUDS BEHIND GYP. BD., CENTER OF BLOCKING TO BE AT 10" AFF AND 28" AFF, MIN. LENGTH OF BLOCKING AS NOTED, END OF BLOCKING MUST LAND ON STUD.
2. PROVIDE 1/2" INTERIOR SANDED PLYWOOD IN LIEU OF GYPSUM WALL BOARD FULL HEIGHT - VERIFY LOCATIONS PART OF SHEER WALL ASSEMBLY WITH STRUCTURAL SHEETS
3. PROVIDE WD. BLOCKING AT WALL SHELVES, SEE DETAIL 2/A6.2
4. COUNTERS AND DECOR WALLS ARE PART OF COUNTER MILLWORK PKG. SEE "F" SHEETS FOR PLAN, ELEVATION AND DETAILS.
5. CONC STOOP, SEE STRUCTURAL SHEETS
6. GENERAL CONTRACTOR TO INSTALL WALK-IN COOLER/FREEZER PACKAGE (SEE EQUIPMENT PLAN AND SCHEDULE), PROVIDE SEALED TRIM, FROM COOLER BOX TO SIDE WALL. VERIFY SEALING REQUIREMENTS PER LOCAL CODE (COOLER 1" FROM WALLS - REFER TO 2,3,4/A6.1).
7. MOP SINK, SEE DETAIL 3/A6.2
8. ELECTRICAL PANEL; SEE ELEC SHEETS - VERIFY W/ MANUFACTURER INSTALL REQUIREMENTS
9. WATER METER LOCATION, SEE PLUMBING SHEETS
10. WATER HEATER, SEE PLUMBING SHEETS
11. WATER FILTER SYSTEM
12. ELECTRICAL DISCONNECT AND METER SOCKET.
13. PHONE BOARD
14. GAS METER
15. PROVIDE WOOD BLOCKING, AS REQUIRED, BEHIND GYP. BD. FOR WALL MOUNTED TELEVISION
16. PROVIDE UNDERGROUND CONDUIT, SEE "F" SHEETS FOR MILLWORK DETAILS AND ELECTRICAL SHEETS.
 - (2) TO FRONT COUNTER, FOR DATA AND ELECTRICAL
 - (1) TO TO CENTER OF "CHARGING STATION" TABLE LEG FOR ELECTRICAL

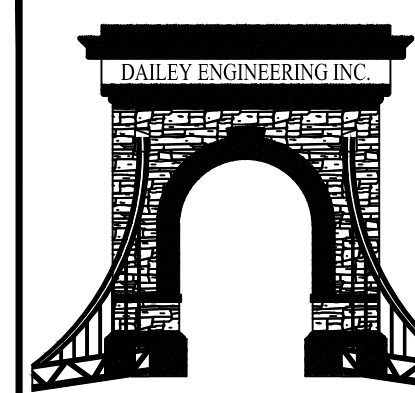
PARTITION TYPES

- | | |
|--|---|
| 1. 2x4 WOOD FRAMING @ 16" O.C. EXTEND TO ROOF STRUCTURE | 4. 3 5/8" MTL. FRAMING @ 16" O.C. EXTEND TO ROOF STRUCTURE. |
| 1A. 2x4 WOOD FRAMING @ 16" O.C. PROVIDE FULL THICKNESS & FULL HEIGHT SOUND BATT INSULATION EXTEND TO ROOF STRUCTURE. | 4A. 3 5/8" MTL. FRAMING @ 16" O.C. PROVIDE FULL THICKNESS & FULL HEIGHT SOUND BATT INSULATION EXTEND TO ROOF STRUCTURE. |
| 2. 2x6 WOOD FRAMING @ 16" O.C. EXTEND TO ROOF STRUCTURE | 5. 2x4 WOOD FRAMING @ 16" O.C., PARTIAL HEIGHT WALL SEE PLAN FOR HEIGHT |
| 2A. 2x6 WOOD FRAMING @ 16" O.C. PROVIDE FULL THICKNESS & FULL HEIGHT SOUND BATT INSULATION EXTEND TO ROOF STRUCTURE. | |
| 3. 6" MTL. FRAMING @ 16" O.C. EXTEND TO ROOF STRUCTURE. | |
| 3A. 6" MTL. FRAMING @ 16" O.C. PROVIDE FULL THICKNESS & FULL HEIGHT SOUND BATT INSULATION EXTEND TO ROOF STRUCTURE. | |

GENERAL NOTES:
 1. PROVIDE 5/8" GYP. BD. ON ALL WALL SURFACES UNLESS NOTED OTHERWISE.
 2. PROVIDE MOISTURE RESISTANT GYP. BD. AT WET WALL LOCATIONS.
 3. ALL INTERIOR WALL SHEATHING (GYP. BD. OR PLYWOOD) TO EXTEND 3" ABOVE CEILING.

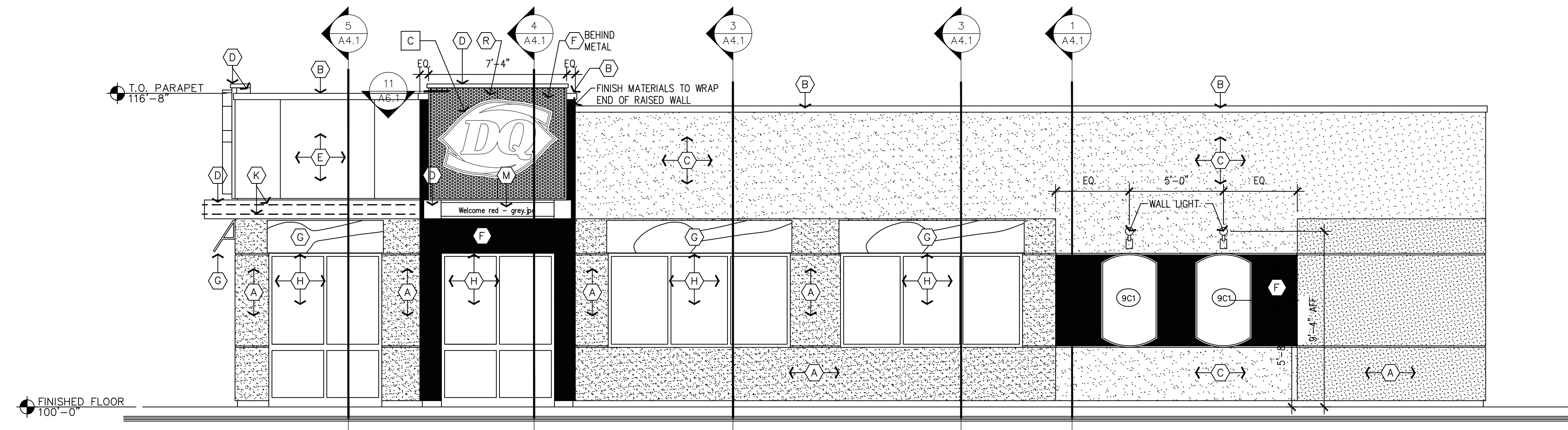


PREPARED FOR:
ROBERTS SERVICES LLC
 CHARLOTTE, MI 48813

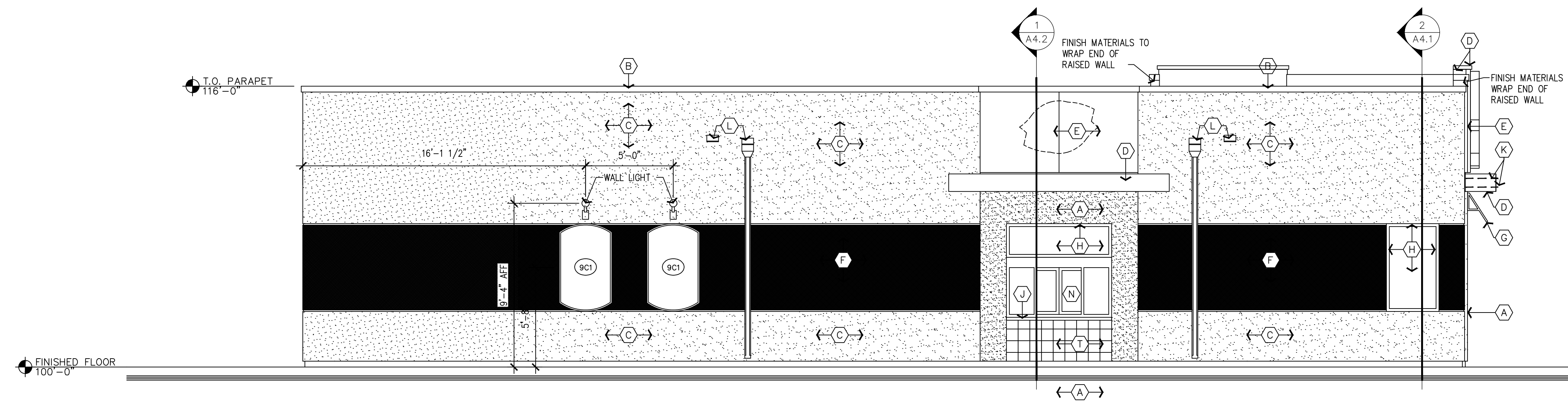


DAILEY ENGINEERING, INC.
 8485 STEPHENSON ROAD
 ONSTED, MI 49265
 PH. # (517) 467-9000
 FAX # (517) 467-9010
 EMAIL - todddailey@me.com

NEW DAIRY QUEEN STORE
 407 SOUTH COCHRAN AVE.
 CHARLOTTE, MICHIGAN 48813



1 SOUTH ELEVATION
A3.1 SCALE: 1/4" = 1'-0"



2 NORTH (DRIVE THRU) ELEVATION
A3.1 SCALE: 1/4" = 1'-0"

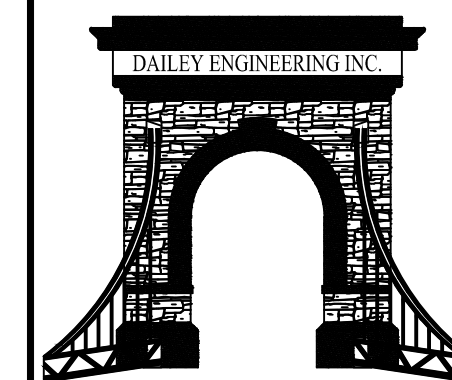
EXTERIOR ELEVATION KEYNOTES: (GATEWAY)

STD

- | | | | |
|--|--|---|--|
| <p>(A) EIFS:
MFR: STO CORPORATION
COLOR: NA16-0015 (MATCHES BENJAMIN MOORE TIMBER WOLF #1600)
FINISH: 306 STO MEDIUM SAND
NOTE: PROVIDE HIGH IMPACT EIFS FROM GRADE TO 3'-0" A.F.F.</p> <p>(B) COPING, & CANOPY RAIN SHIELD:
MFR: UNA-CLAD
MATL: .040 ALUMINUM
COLOR: CITYSCAPE</p> <p>(C) EIFS:
MFR: STO CORPORATION
COLOR: NA16-0016 (MATCHES BENJAMIN MOORE PEBBLE BEACH #1597)
FINISH: 306 STO MEDIUM SAND
NOTE: PROVIDE HIGH IMPACT EIFS FROM GRADE TO 3'-0" A.F.F.</p> <p>(D) EYEBROW, EYEBROW FLASHING, CANOPY, & CANOPY FLASHING:
MFR: UNA-CLAD
MATL: .040 ALUMINUM
COLOR: CLEAR SATIN ANODIZED ALUMINUM</p> <p>(E) METAL PANEL:
MFR: ALPOLIC
STYLE: 3MM
COLOR: DQ BLUE</p> | <p>(F) EIFS BUILDING:
MFR: STO CORPORATION
COLOR: NA16-0017 (MATCHES BENJAMIN MOORE OIL NAVY #2063-10)
FINISH: 306 STO MEDIUM SAND
NOTE: PROVIDE HIGH IMPACT EIFS FROM GRADE TO 3'-0" A.F.F.</p> <p>(G) FABRIC AWNING:
MFR: SIGN SOURCE
MATERIAL: SUNBRELLA
COLOR: CAPTAIN NAVY WITH GRAPHIC IMAGE
FRAME: 1"x1" ALUMINUM (WELD ALL JOINTS, GRIND SMOOTH)
FINISH: ANODIZED CLEAR SATIN</p> <p>(H) STOREFRONT FRAME:
MFR: YKK AP AMERICA INC.
STYLE: 2"x4 1/2"
FINISH: CLEAR SATIN ANODIZED ALUMINUM
GLAZING: CLEAR, 1" INSULATED, LOW E</p> <p>(H1) SLIDING STOREFRONT:
MFR: NANAWALL
FINISH: CLEAR SATIN ANODIZED ALUMINUM
GLAZING: CLEAR, 1" INSULATED, LOW E</p> <p>(J) WINDOW SILL FLASHING:
MFR: YKK AP AMERICA INC.
FINISH: ANODIZED CLEAR SATIN
SIZE: 2" AS REQ'D BY LOCATION</p> | <p>(K) STRIP LIGHTING:
MFR: MORGAN HOPE
STYLE: LED-Flex WITH CLEAR ANODIZED AL TRACK
MODEL: LED-MH-120V-EB (BLUE LED)
NOTE: MUST BE INSTALLED PER MANUFACTURERS REQUIREMENTS
NOTE: AVAILABLE THRU HJC</p> <p>(L) SCUPPERS & DOWN SPOUTS:
MFR: UNA-CLAD
MATL: .040 ALUMINUM
COLOR: STONE WHITE</p> <p>(M) "WELCOME" GRAPHIC AT ENTRY CANOPY:
MFR: SIGN SOURCE
SERIES: DQ SCRIPT (RED "WELCOME") APPLIED TO CITYSCAPE BY UNA-CLAD (72"W x 10"H)
NOTE: METALS SUPPLIER TO COORDINATE WITH MFR.</p> <p>(N) DRIVE-THRU WINDOW:
MFR: QUIKSERV
MATERIAL: ALUMINUM
FINISH: ANODIZED CLEAR SATIN
NOTE: AVAILABLE THRU N. WASSERSTROM & SONS. SEE EQUIPMENT SCHEDULE FOR DETAILS</p> <p>(P) PAINT HOLLOW METAL DOOR & FRAME:
MFR: BENJAMIN MOORE
COLOR: TIMBER WOLF #1600
PRODUCT: ULTRA SPEC HP D.T.M. ACRYLIC SEMI GLOSS ENAMEL HP29
PRIMER: FIRST COAT ULTRA SPEC HP D.T.M. ACRYLIC SEMI GLOSS ENAMEL HP29
NOTE: PREP SURFACE AS REQUIRED TO ASSURE GOOD PAINT ADHESION</p> | <p>(R) PERFORATED METAL ACCENT PANELS:
MFR: McNICOLS QUALITY PERFORATED METAL
MTL: 48x120 SHEET, 1" HOLES, STAGGERED PATTERN
FINISH: ROUND HOLE, ALUM. TYPE 3003-H14, .125 GA., MILL FINISH
FRAME: 1" ALUMINUM (WELD ALL JOINTS, GRIND SMOOTH)
FINISH: ANODIZED CLEAR SATIN</p> <p>(T) CERAMIC TILE D.T. WAINSCOT:
MFR: INTERCERAMIC
SERIES: LIPSTICK
COLOR: BOMBSHELL RED
SIZE: 8"x8"
GROUT: CUSTOM BUILDING PRODUCTS - CEG IG
GROUT COLOR: PLATINUM #115
NOTE: MUST BE INSTALLED PER TILE COUNCIL OF NORTH AMERICA "W244E-09" AND ANSI "A118.4"
NOTE: AVAILABLE THRU HJC</p> <p>(T-3) PAINT AT BOLLARDS:
MFR: BENJAMIN MOORE
COLOR: DAIRY QUEEN RED (SAFETY RED)
PRODUCT: AJRA EXTERIOR SEMI GLOSS #632
PRIMER: INSL-X STIX WATERBORNE BONDING PRIMER SKA-110</p> <p>(V) WALK-IN COOLER/FREEZER
MFR: NORLAKE
COLOR: PREFINISHED FROM MANUFACTURER TO MATCH BUILDING
NOTE: AVAILABLE THRU N. WASSERSTROM & SONS. SEE EQUIPMENT SCHEDULE FOR DETAILS</p> |
|--|--|---|--|



PREPARED FOR:
ROBERTS SERVICES LLC
-
CHARLOTTE, MI 48813



DAILEY ENGINEERING, INC.
8485 STEPHENSON ROAD
ONSTED, MI 49265

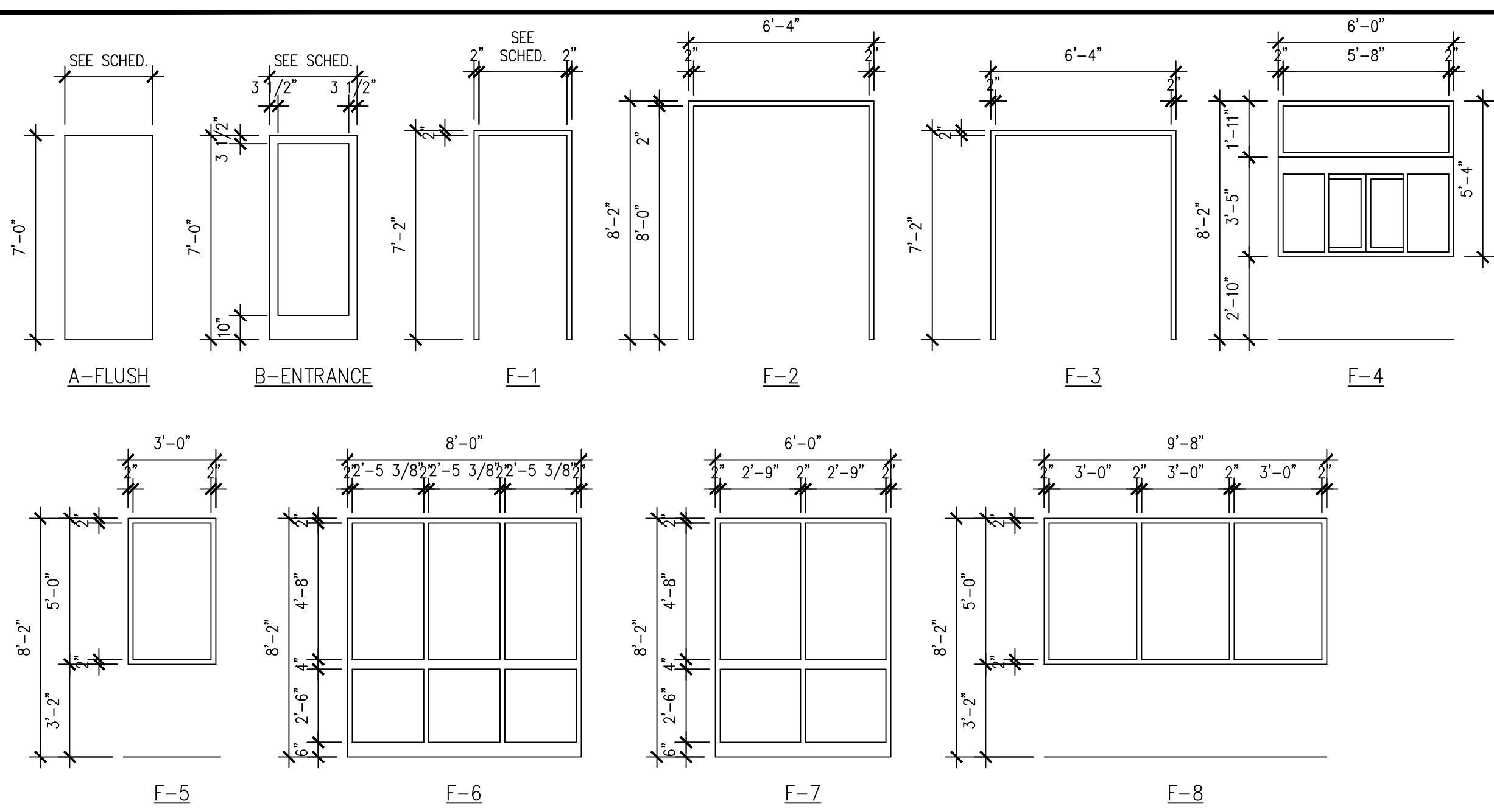
PH. # (517) 467-9000
FAX # (517) 467-9010
EMAIL - todddailey@me.com

NEW DAIRY QUEEN STORE
407 SOUTH COCHRAN AVE.
CHARLOTTE, MICHIGAN 48813

DRAWN BY: M. FOWLER | CHK'D. BY: TA DAILEY | APP'D. BY:

ELEVATIONS

DATE: 08/24/2017 | REV.: 0 | DRAWING NO. A3.1
SCALE: 1/4" = 1'-0"



OPENING SCHEDULE NATIONAL ACCOUNT DOOR AND FRAME SUPPLIER (PLAM, WOOD AND H.M.)
HAMILTON PARKER, SEE NATIONAL VENDORS LIST

OPNG. NO.	OPENING LOCATION	DOOR/WINDOW SIZE	TYPE	MATERIAL	FINISH	FRAME TYPE	MATERIAL	FINISH	FIRE RATING	HARDWARE GROUP	NOTES:
100A	VESTIBULE (EXT.)	(2) 3'-0" x 8'-0" x 1 3/4"	B	ALUM.	CLEAR	F2	ALUM.	CLEAR	-	E1	-
100B	VESTIBULE (INT.)	(2) 3'-0" x 7'-0" x 1 3/4"	B	ALUM.	CLEAR	F3	ALUM.	CLEAR	-	E2	MOUNT BOTTOM OF DOOR FRAME LEVEL WITH TOP OF FLOOR TILE
101A	DINING ROOM	3'-0" x 5'-0"				F5	ALUM.	CLEAR	-	-	-
101B	DINING ROOM	3'-0" x 5'-0"				F5	ALUM.	CLEAR	-	-	-
101C	DINING ROOM	8'-0" x 8'-2"				F6	ALUM.	CLEAR	-	-	-
101D	DINING ROOM	8'-0" x 8'-2"				F6	ALUM.	CLEAR	-	-	-
101E	DINING ROOM	6'-0" x 8'-2"				F7	ALUM.	CLEAR	-	-	-
101F	DINING ROOM	9'-8" x 5'-0"				F8	ALUM.	CLEAR	-	-	-
101G	DINING ROOM	9'-8" x 5'-0"				F8	ALUM.	CLEAR	-	-	-
102	WOMENS	3'-0" x 7'-0" x 1 3/4"	A	P.C.	PLAM	F1	H.M.	PAINT	-	R1	UNDERCUT BY 1". - PLAM: WILSONART LIMBER MAPLE 10734-60
103	MENS	3'-0" x 7'-0" x 1 3/4"	A	P.C.	PLAM	F1	H.M.	PAINT	-	R1	UNDERCUT BY 1". - PLAM: WILSONART LIMBER MAPLE 10734-60
104	DRIVE THRU	6'-0" x 5'-4"				F4	ALUM.	CLEAR	-	-	-
107	OFFICE	3'-0" x 7'-0" x 1 3/4"	A	P.C.	PLAM	F1	H.M.	PAINT	-	0	UNDERCUT BY 1". - PLAM: WILSONART LIMBER MAPLE 10734-60
108	SERVICE	3'-6" x 7'-0" x 1 3/4"	A	H.M.	H.M.	F1	H.M.	PAINT	-	S1	SEE EXTERIOR ELEVATIONS FOR COLOR

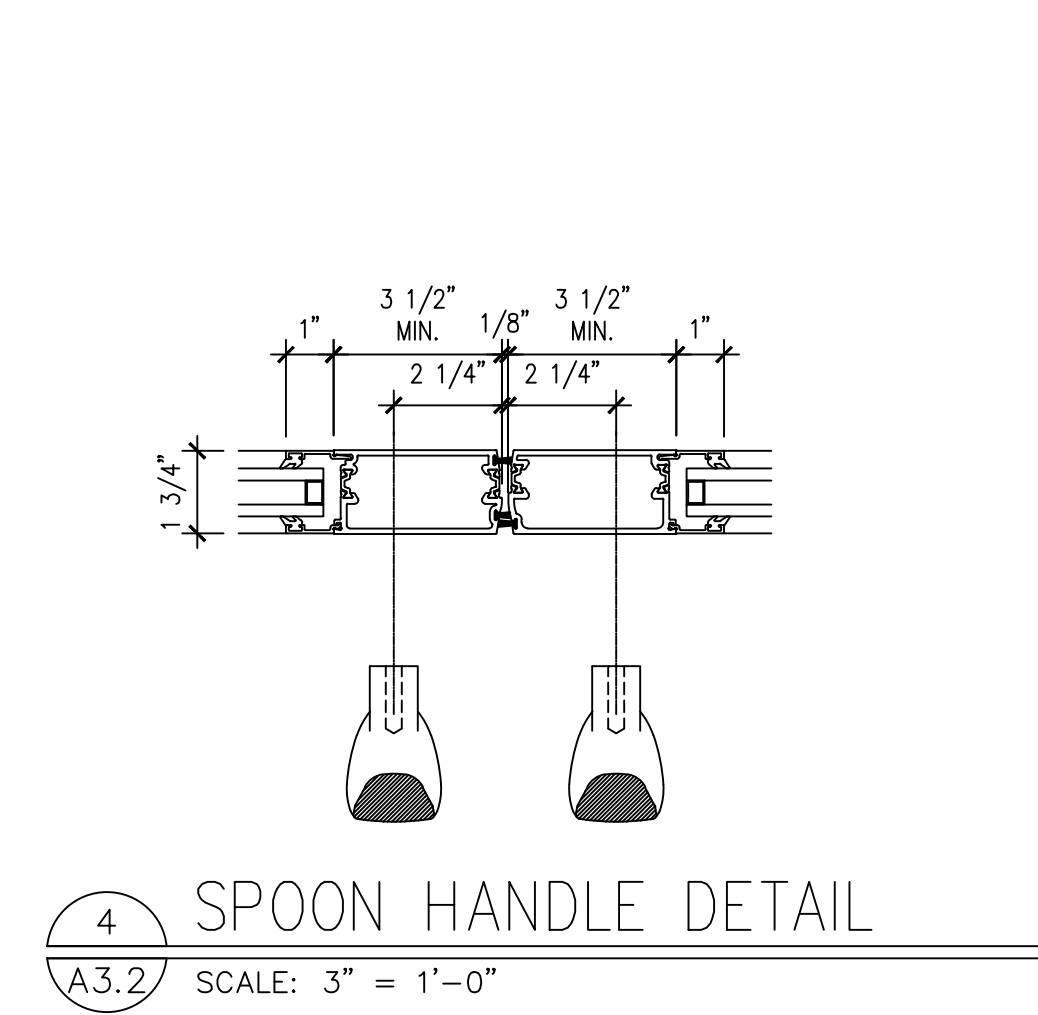
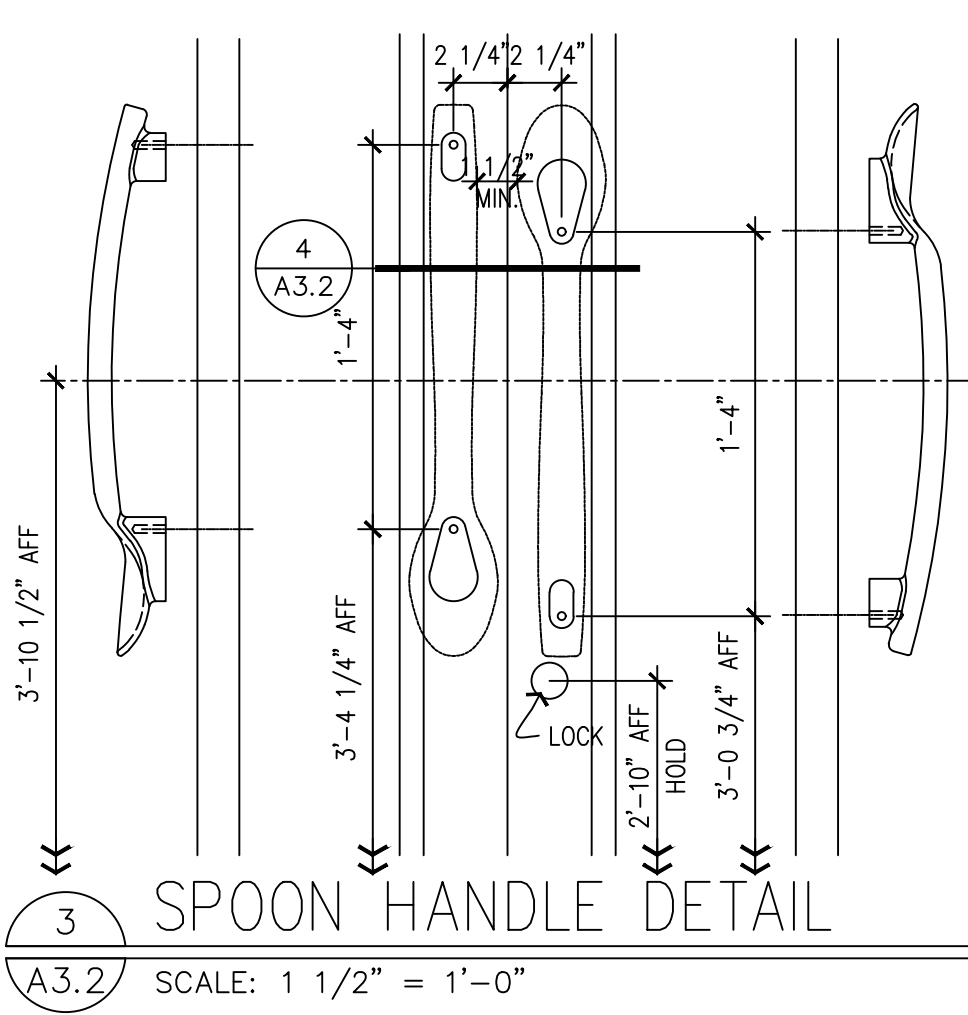
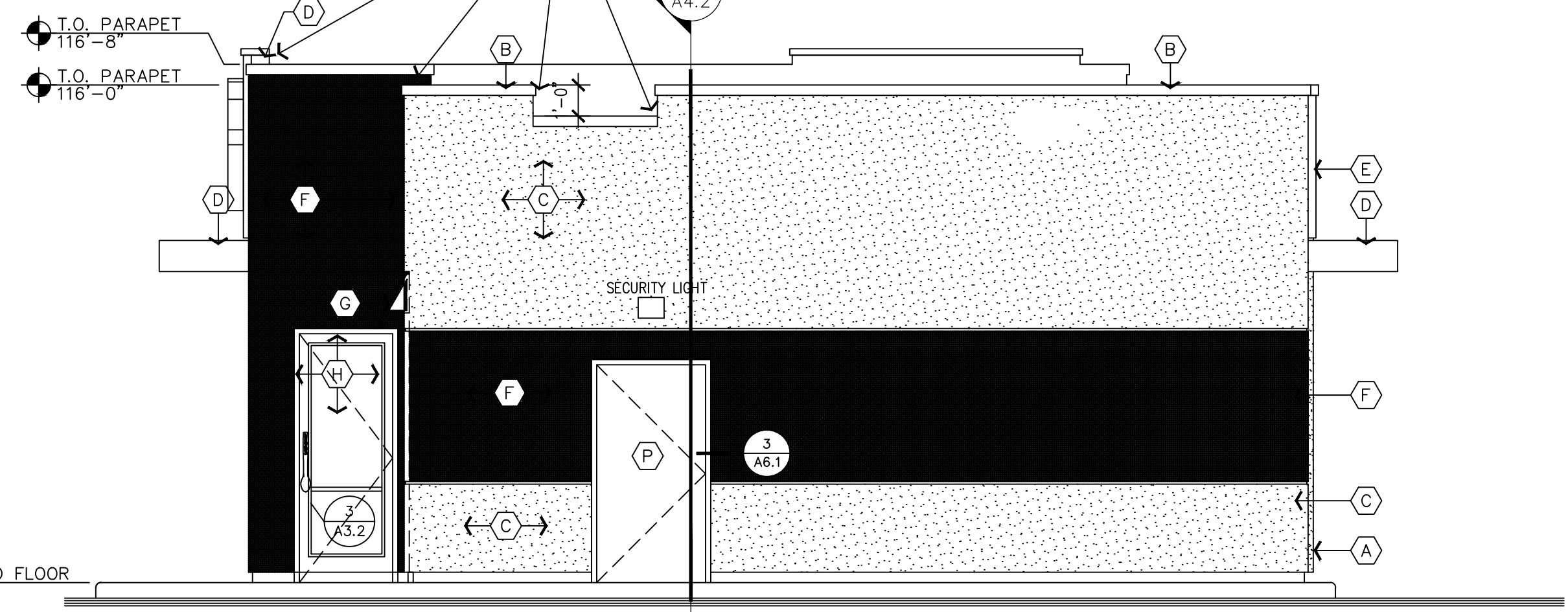
NOTES:
 1. PARTICLE CORE DOORS: SIZE AS PER PLAN AND SCHEDULE. ALL EDGES/SURFACES TO BE COVERED WITH PLASTIC LAMINATE.
 2. HOLLOW METAL DOOR(S): SIZE AS PER PLAN AND SCHEDULE. (HOT ROLLED LEVEL 2 MODEL 2) STEEL TO BE 18 Gg., INTERIOR TO BE FOAM INSULATION, WITH INTEGRAL REINFORCEMENT FOR CLOSURE AND PANIC HARDWARE.
 ALUM = ALUMINUM
 HM = HOLLOW METAL
 PC = PARTICLE CORE
 BRZ = ANODIZED ALUMINUM STATUTORY BRONZE FINISH
 CLR = ANODIZED ALUMINUM CLEAR FINISH
 PNT = SEE INTERIOR ELEVATIONS AND FINISH SCHEDULE FOR COLOR

HARDWARE GROUPS NATIONAL ACCOUNT DOOR HARDWARE
HAMILTON PARKER, SEE NATIONAL VENDORS LIST

<p>GROUP #E1: TYPICAL EXTERIOR VESTIBULE DOORS HARDWARE PART OF DOOR MANUFACTURERS PACKAGE -CLOSER: HAGER MFG. MODEL #5200 SPR CSH CLOSER. -HINGE(S): HAGER MFG., MDL #BB1199 32D WITH NON-REMOVABLE PINS, 4.5"x4.5"x0.180" Thk., (4) HINGES PER LEAF. -KEYED CYLINDERS: HAGER MFG., MDL #3902 MORTISE CYLINDER, PROVIDE (2) KEYS PER DOOR, ALL CYLINDERS KEYED ALIKE. (MOUNTED AT 34" AFF, COORDINATE W/ SPOON HANDLE) -SPOON HANDLE (PROVIDED & INSTALLED BY ALUM. STOREFRONT CONTRACTOR, AVAILABLE FROM HJC, SEE ADD. NATIONAL VENDORS LIST) -PUSH BAR: HAGER MFG., 130S -SWEEP: HAGER MFG., MDL #901SB, MIL ALUM FINISH, SIZED TO FIT DOOR WIDTH. -THRESHOLD: HAGER MFG., MDL #412 S, MIL ALUM FINISH, SIZED TO FIT DOOR OPENING WIDTH. -WEATHERSTRIPPING:</p> <p>1) THE G.C. TO PROVIDE DOOR SIGNAGE STATING "THIS DOOR TO REMAIN UNLOCKED DURING BUSINESS HOURS" (SINGLE LINE HORIZONTAL SIGN PREFERRED) 2) THE DO RED SPOON HANDLES HAVE SPECIAL INSTALLATION REQUIREMENTS. ALUMINUM STOREFRONT MANUFACTURER MUST COORDINATE LOCK & HANDLE HEIGHTS.</p>	<p>GROUP #E2: TYPICAL INTERIOR VESTIBULE DOORS HARDWARE PART OF DOOR MANUFACTURERS PACKAGE -CLOSER: HAGER MFG. MODEL #5200 SPR CSH CLOSER. -HINGE(S): HAGER MFG., MDL #BB1199 32D WITH NON-REMOVABLE HINGE PINS, 4.5" X 4.5" X 0.180" Thk., (4) HINGES PER LEAF. -PUSH/PULL: HAGER MFG., MDL#1590 LH COMBO 32D, & MDL#1590 RH COMBO 32D. -FLOOR STOP: HAGER 241F 26D DOME LOW STOP, (1) PER LEAF</p>	
<p>GROUP #S1: TYPICAL REAR SERVICE DOOR -CLOSER: HAGER MFG. MODEL #5200 SPR CSH CLOSER. -EXIT DEVICE: HAGER MFG., MDL #4701 RIM US28, SPRAYED ALUMINUM FINISH. -HINGE(S): HAGER MFG., MDL #ECBB 1100 US26D WITH NON-REMOVABLE HINGE PINS, 4.5" X 4.5" X 0.134" Thk., (4) HINGES PER LEAF. -KICK PLATE: HAGER MFG., MDL #ARMOR PLATE, 40"W X 20"H X 0.05" Thk. -PROTECTOR, TRIM: HAGER, MFG., MDL #D2250 -PULL: HAGER MFG., MDL#4J32D, (EXTERIOR SIDE OF DOOR). -SWEEP: HAGER MFG., MDL #801S V, MIL ALUM FINISH, SIZED TO FIT DOOR WIDTH. -THRESHOLD: HAGER MFG., MDL #412S, MIL ALUM FINISH, SIZED TO FIT DOOR OPENING WIDTH. -VIEWER: HAGER MFG., 1756 US26D, 200 DEGREE VIEW (FACTORY INSTALLED). -WEATHERSTRIPPING: HAGER MFG., MDL #891S V, MIL ALUM FINISH, SIZED TO FIT DOOR.</p>	<p>GROUP #R1: TYPICAL SINGLE OCCUPANCY RESTROOM DOOR -CLOSER: HAGER MFG. MODEL #5200 CLOSER. -HINGE(S): HAGER MFG., MDL #ECBB 1100 US26D, 4.5" X 4.5" X 0.134" Thk., (3) HINGES PER LEAF. -KICK PLATE: HAGER MFG., MDL#190S 18 Gg. 34"W X 10"H X 0.05" Thk. (MOUNTING HOLES PREDRILLED AT FACTORY, INSTALLED ON PUSH SIDE OF DOOR). -STOP: DOOR: HAGER MFG., MDL #232W 32D, BRUSHED CHROME, 2 1/2" DIA. WALL MOUNT. -INDICATOR LOCK: SCHLAGE B571626 -(2) 4x16 PUSH PLATES - DRILLED -PULL HANDLE: HAGER 3E320</p>	<p>GROUP #O: TYPICAL OFFICE DOOR -CLOSER: HAGER MFG. MODEL #5200 CLOSER. -HINGE(S): HAGER MFG., MDL #ECBB 1100 US26D, 4.5" X 4.5" X 0.134" Thk., (3) HINGES PER LEAF. -KICK PLATE: HAGER MFG., MDL#190S 18 Gg. 34"W X 10"H X 0.05" Thk. (MOUNTING HOLES PREDRILLED AT FACTORY, INSTALLED ON PUSH SIDE OF DOOR). -STOP: DOOR: HAGER MFG., MDL #232W 32D, BRUSHED CHROME, 2 1/2" DIA. WALL MOUNT. -LOCKSET: 3553 US26D-WITHNELL (KEYED)</p>

1 WEST (FRONT) ELEVATION
SCALE: 1/4" = 1'-0"

2 EAST (REAR) ELEVATION
SCALE: 1/4" = 1'-0"



PREPARED FOR:
ROBERTS SERVICES LLC
 CHARLOTTE, MI 48813

DAILEY ENGINEERING, INC.
 8485 STEPHENSON ROAD
 ONSTED, MI 49266

PH. # (517) 467-9000
 FAX # (517) 467-9010
 EMAIL - todddailey@me.com

NEW DAIRY QUEEN STORE
 407 SOUTH COCHRAN AVE.
 CHARLOTTE, MICHIGAN 48813

DRAWN BY: M. FOWLER | CHK'D. BY: TA DAILEY | APP'D. BY:
 ELEVATIONS, DOOR & FRAME TYPES

DATE: 08/24/2017 | REV.: 0 | DRAWING NO. A3.2
 SCALE: AS SHOWN