

CHARLOTTE FIRE DEPARTMENT

FIRE RUN TOTALS

	2010		2011		2012		2013		2014		2015		
	RUNS	YEAR	RUNS	YEAR	RUNS	YEAR	RUNS	YEAR	RUNS	YEAR	RUNS	YEAR	
	THIS	TO	THIS	TO	THIS	TO	THIS	TO	THIS	TO	THIS	TO	
MONTH	DATE	MONTH	DATE	MONTH	DATE	MONTH	DATE	MONTH	DATE	MONTH	DATE	MONTH	DATE
JANUARY	35	-- 35	52	-- 52	40	-- 40	46	-- 46	56	-- 56	42	-- 42	
FEBRUARY	31	-- 66	35	-- 87	44	-- 84	46	-- 92	28	-- 84	40	-- 82	
MARCH	57	-- 123	34	-- 121	54	-- 138	48	-- 140	47	-- 131	51	-- 133	
APRIL	46	-- 169	42	-- 163	33	-- 171	54	-- 194	48	-- 179	59	-- 192	
MAY	52	-- 221	66	-- 229	33	-- 204	63	-- 257	39	-- 218	54	-- 246	
JUNE	62	-- 283	44	-- 273	45	-- 249	43	-- 300	52	-- 270	45	-- 291	
JULY	70	-- 353	67	-- 340	89	-- 338	33	-- 333	36	-- 306	62	-- 353	
AUGUST	41	-- 394	55	-- 395	29	-- 367	41	-- 374	56	-- 362	44	-- 397	
SEPTEMBER	54	-- 448	43	-- 438	47	-- 414	37	-- 411	60	-- 422	--	--	
OCTOBER	67	-- 515	57	-- 495	38	-- 452	44	-- 455	49	-- 471	--	--	
NOVEMBER	47	-- 562	78	-- 573	35	-- 487	76	-- 531	42	-- 513	--	--	
DECEMBER	58	-- 620	58	-- 631	49	-- 536	156	-- 687	53	-- 566	--	--	

	2015		DEVIATION FROM LAST YEAR		5 YEAR AVERAGE		DEVIATION FROM 5 YR AVERAGE		15 YEAR AVERAGE		DEVIATION FROM 15 YR AVERAGE		
	RUNS	YEAR	RUNS	YEAR	RUNS	YEAR	RUNS	YEAR	RUNS	YEAR	RUNS	YEAR	
	THIS	TO	THIS	TO	THIS	TO	THIS	TO	THIS	TO	THIS	TO	
MONTH	DATE	MONTH	DATE	MONTH	DATE	MONTH	DATE	MONTH	DATE	MONTH	DATE	MONTH	DATE
JANUARY	42	-- 42	-14	-14	46	46	-4	-4	44	44	-2	-2	
FEBRUARY	40	-- 82	12	-2	37	83	3	-1	37	81	3	1	
MARCH	51	-- 133	4	2	48	131	3	2	45	126	6	7	
APRIL	59	-- 192	11	13	45	175	14	17	43	169	16	23	
MAY	54	-- 246	15	28	51	226	3	20	48	216	6	30	
JUNE	45	-- 291	-7	21	49	275	-4	16	46	262	-1	29	
JULY	62	-- 353	26	47	59	334	3	19	50	312	12	41	
AUGUST	44	-- 397	-12	35	44	378	0	19	42	354	2	43	
SEPTEMBER	--	--	--	--	48	427	--	--	43	397	--	--	
OCTOBER	--	--	--	--	51	478	--	--	44	441	--	--	
NOVEMBER	--	--	--	--	56	533	--	--	41	482	--	--	
DECEMBER	--	--	--	--	75	608	--	--	52	534	--	--	

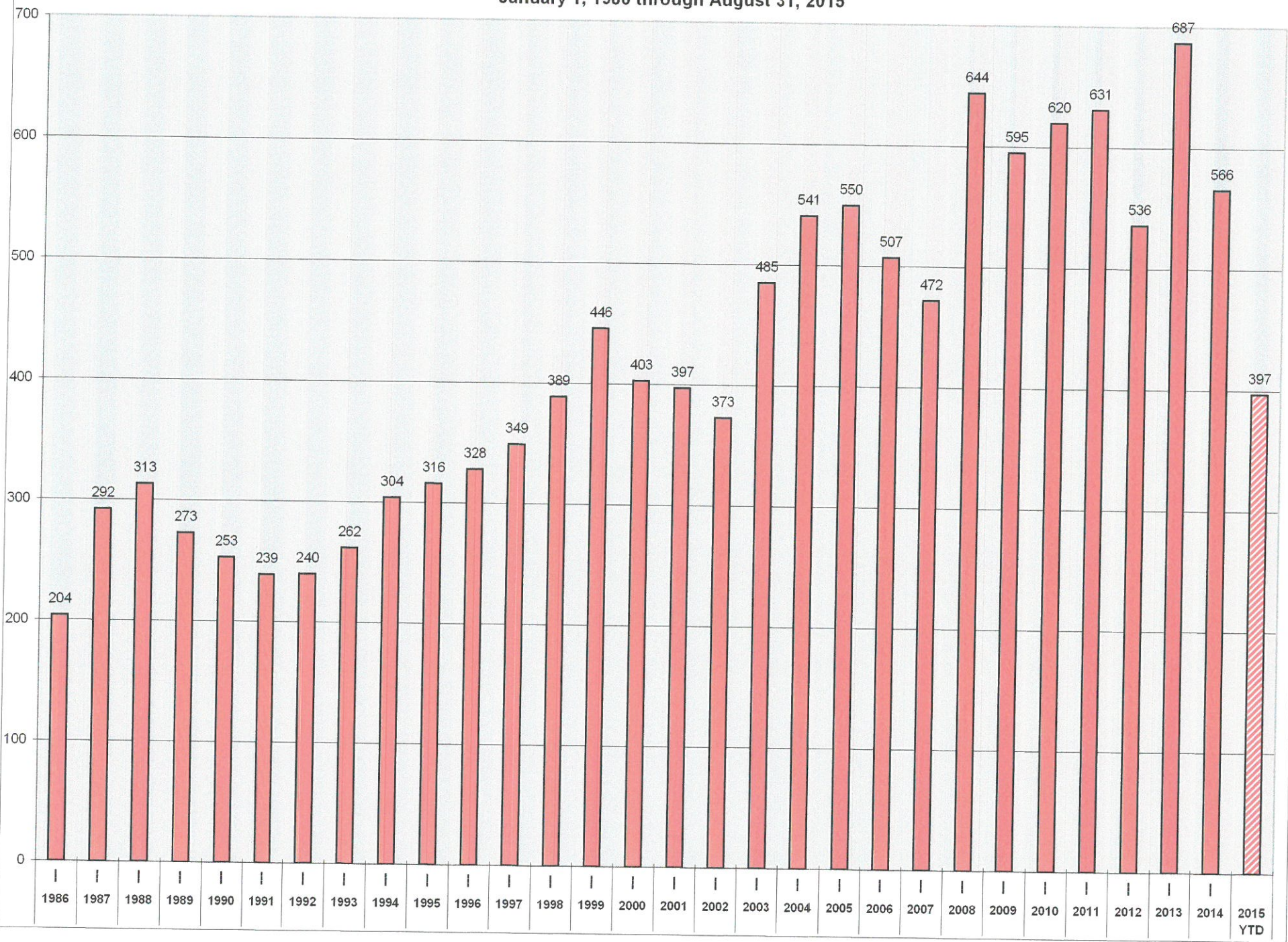
MOST / LEAST RUNS PER MONTH 1976 THRU 2015

	MOST		LEAST		TOTAL		TOTAL		TOTAL	
	YEAR	RUNS	YEAR	RUNS	YEAR	RUNS	YEAR	RUNS	YEAR	RUNS
JANUARY	2014 =	56	1976 =	7	1986 =	204	1998 =	389	2010 =	620
FEBRUARY	2008 =	52	82,86 =	9	1987 =	292	1999 =	446	2011 =	631
MARCH	2009 =	68	78,80 =	15	1988 =	313	2000 =	403	2012 =	536
APRIL	1984 =	68	1983 =	10	1989 =	273	2001 =	397	2013 =	687
MAY	2004 =	67	1983 =	9	1990 =	253	2002 =	373	2014 =	566
JUNE	2008 =	82	1993 =	13	1991 =	239	2003 =	485	2015 YTD =	397
JULY	2012 =	89	1982 =	11	1992 =	240	2004 =	541		
AUGUST	2007, 14 =	56	1978 =	14	1993 =	262	2005 =	550		
SEPTEMBER	2008 =	69	1977 =	8	1994 =	304	2006 =	507		
OCTOBER	2010 =	67	1985 =	6	1995 =	316	2007 =	472		
NOVEMBER	2011 =	78	1985 =	6	1996 =	328	2008 =	644		
DECEMBER	2013 =	156	1982 =	9	1997 =	349	2009 =	595		
TOTAL		908	TOTAL	117						

Total Fire Runs since January 1, 1976 = 14900
Average per year = 376

MONTH	RUNS	MONTH	RUNS	MONTH	RUNS	MONTH	RUNS	MONTH	RUNS	MONTH	RUNS	MONTH	RUNS	MONTH	RUNS
Oct-86	8	Jan-98	19	Mar-93	24	Mar-86	29	Apr-87	35	Nov-04	40	Jul-03	46	Aug-07	56
Feb-86	9	Feb-89	20	Aug-93	24	Jul-93	29	Dec-94	35	Feb-07	40	Nov-05	46	Jan-14	56
Sep-91	9	Jun-89	20	Apr-98	24	Mar-94	29	Jan-02	35	Apr-07	40	Oct-06	46	Aug-14	56
Jan-86	12	Apr-90	20	Feb-99	24	Apr-97	29	Oct-03	35	Jan-12	40	Oct-09	46	Apr-09	57
Apr-86	12	Mar-91	20	Aug-00	24	Apr-00	29	Dec-04	35	Feb-15	40	Apr-10	46	Mar-10	57
Jan-89	12	Feb-93	20	Jun-87	25	Jul-01	29	Feb-05	35	Oct-97	41	Jan-13	46	Oct-11	57
Dec-90	12	May-94	20	Mar-88	25	Aug-12	29	Jun-05	35	Nov-98	41	Feb-13	46	Mar-97	58
Jan-91	12	Apr-95	20	Nov-89	25	Nov-86	30	Oct-05	35	Jan-03	41	Aug-09	47	Dec-10	58
Apr-92	12	Feb-96	20	Jan-90	25	Apr-94	30	Mar-08	35	Mar-05	41	Nov-10	47	Dec-11	58
Sep-87	13	Nov-97	20	Jan-94	25	Aug-99	30	Nov-09	35	Aug-10	41	Sep-12	47	Jun-98	59
Dec-88	13	Dec-97	20	Sep-94	25	Sep-01	30	Jan-10	35	Aug-13	41	Mar-14	47	Oct-04	59
Feb-91	13	Feb-98	20	Aug-95	25	Jul-02	30	Feb-11	35	Oct-99	42	Dec-08	48	Sep-05	59
Dec-91	13	Nov-02	20	Oct-95	25	Sep-07	30	Nov-12	35	May-00	42	Mar-13	48	May-08	59
Jun-93	13	Feb-87	21	Jun-96	25	Mar-95	31	Dec-96	36	Jun-02	42	Apr-14	48	Jun-09	59
Jul-86	14	Aug-87	21	Jul-96	25	Aug-97	31	Mar-99	36	Dec-03	42	Jan-09	49	Apr-15	59
Nov-92	14	Mar-89	21	May-97	25	Sep-99	31	Oct-00	36	Feb-06	42	May-09	49	Sep-14	60
Jun-86	15	Jul-89	21	Sep-97	25	Dec-99	31	May-07	36	Jun-06	42	Dec-09	49	Mar-06	61
Jan-87	15	Oct-89	21	Feb-00	25	Oct-01	31	Jul-14	36	Aug-06	42	Dec-12	49	Jun-10	62
Oct-88	15	Aug-90	21	Feb-02	25	Dec-01	31	Oct-96	37	Dec-07	42	Oct-14	49	Jul-15	62
Aug-92	15	Oct-90	21	Sep-02	25	Mar-02	31	Jun-99	37	Aug-08	42	Feb-04	50	Jul-05	63
Nov-93	15	Jan-92	21	May-87	26	Jun-04	31	Feb-03	37	Apr-11	42	Jul-04	50	May-13	63
May-86	16	May-92	21	Apr-91	26	Sep-04	31	Nov-03	37	Nov-14	42	Jul-99	51	May-11	66
Aug-86	16	Oct-93	21	Oct-92	26	Feb-10	31	Jun-07	37	Jan-15	42	Dec-06	51	May-04	67
Sep-88	16	Aug-94	21	Dec-92	26	Jun-92	32	Jul-07	37	Aug-01	43	Oct-08	51	Oct-10	67
Jun-91	16	Oct-94	21	Jun-97	26	Jun-95	32	Sep-13	37	Jan-04	43	Mar-15	51	Jul-11	67
Sep-96	16	Aug-96	21	Dec-98	26	Jul-98	32	May-89	38	Mar-07	43	Mar-04	52	Mar-09	68
Oct-87	17	Dec-89	22	Feb-01	26	Aug-98	32	Mar-00	38	Jul-09	43	Feb-08	52	Sep-08	69
Nov-87	17	Mar-90	22	Mar-01	26	Sep-98	32	Sep-00	38	Sep-11	43	Apr-08	52	Jul-08	70
May-91	17	Dec-93	22	Nov-01	26	Apr-99	32	Jun-01	38	Jun-13	43	May-10	52	Jul-10	70
Feb-92	17	Mar-98	22	Nov-06	26	Jun-00	32	Aug-04	38	Nov-99	44	Jan-11	52	Nov-13	76
Feb-88	18	Aug-02	22	Aug-89	27	Dec-00	32	Jan-05	38	May-02	44	Jun-14	52	Nov-11	78
May-88	18	Dec-87	23	Aug-91	27	May-01	32	Sep-06	38	Jun-03	44	Jun-88	53	Jun-08	82
Sep-89	18	May-90	23	Mar-96	27	Dec-02	32	Oct-07	38	Dec-05	44	Jan-00	53	Jul-12	89
Oct-91	18	Sep-90	23	Jul-00	27	May-06	32	Oct-12	38	Jun-11	44	Dec-14	53	Dec-13	156
Jul-92	18	Nov-91	23	Nov-00	27	Apr-93	33	Jul-87	39	Feb-12	44	May-98	54		
Feb-95	18	Sep-93	23	Sep-03	27	Jun-94	33	Jan-01	39	Oct-13	44	Apr-05	54		
Dec-95	18	Feb-94	23	Apr-06	27	Jan-99	33	Jan-07	39	Aug-15	44	Sep-09	54		
Sep-86	19	Jul-94	23	Aug-88	28	Apr-02	33	Nov-08	39	Jul-88	45	Sep-10	54		
Jun-90	19	Jan-95	23	Apr-89	28	Apr-12	33	Feb-09	39	Jul-91	45	Mar-12	54		
Nov-90	19	Feb-97	23	May-95	28	May-12	33	May-14	39	Apr-04	45	Apr-13	54		
Mar-92	19	Jul-97	23	Jul-95	28	Jul-13	33	Mar-87	40	May-05	45	May-15	54		
Sep-92	19	Dec-86	24	Nov-95	28	Apr-88	34	Sep-95	40	Jan-06	45	May-99	55		
Jan-93	19	Jan-88	24	Jan-96	28	May-96	34	Apr-96	40	Jan-08	45	Aug-05	55		
May-93	19	Nov-88	24	Jan-97	28	Oct-02	34	Mar-03	40	Jun-12	45	Jul-06	55		
Nov-94	19	Feb-90	24	Oct-98	28	Nov-07	34	Apr-03	40	Jun-15	45	Aug-11	55		
Nov-96	19	Jul-90	24	Feb-14	28	Mar-11	34	Aug-03	40	Apr-01	46	May-03	56		

CHARLOTTE FIRE DEPARTMENT
TOTAL FIRE RUNS PER YEAR
January 1, 1986 through August 31, 2015



Charlotte Fire Department

Comparison of 3 year averages

	3 YR AVERAGE 1992-1994		3 YR AVERAGE 1993-1995		3 YR AVERAGE 1994-1996		3 YR AVERAGE 1995-1997		3 YR AVERAGE 1996-1998		3 YR AVERAGE 1997-1999		3 YR AVERAGE 1998-2000		3 YR AVERAGE 1999-2001		3 YR AVERAGE 2000-2002									
JANUARY	22	22	22	22	1	25	25	3	26	26	1	25	25	-1	27	27	2	35	35	8	42	42	7	42	42	1
FEBRUARY	20	42	20	43	1	20	46	3	20	47	1	21	46	-1	22	49	3	23	58	9	25	67	9	25	68	1
MARCH	24	66	28	71	5	29	75	4	39	85	11	36	82	-4	39	88	6	32	90	2	33	100	10	32	99	-1
APRIL	25	91	28	98	8	30	105	6	30	115	10	31	113	-2	28	116	3	28	118	2	36	136	17	36	135	0
MAY	20	111	22	121	10	27	132	11	29	144	12	38	150	6	45	161	10	50	169	8	43	179	10	39	175	-4
JUNE	26	137	26	147	10	30	162	15	28	172	10	37	187	15	41	201	14	43	211	10	36	214	3	37	212	-2
JULY	23	160	27	173	13	25	187	14	25	197	10	27	214	17	35	237	23	37	248	11	36	250	2	29	241	-9
AUGUST	20	180	23	197	17	22	210	13	26	223	13	28	242	19	31	268	26	29	277	9	32	282	6	30	270	-12
SEPTEMBER	22	202	29	226	24	27	237	11	27	250	13	24	266	16	29	297	31	34	310	13	33	315	5	31	301	-14
OCTOBER	23	225	22	248	23	28	264	16	34	284	20	35	301	17	37	334	33	35	346	12	36	352	6	34	335	-17
NOVEMBER	16	241	21	269	28	22	286	17	22	306	20	27	328	22	35	369	41	37	383	14	32	384	1	24	359	-25
DECEMBER	28	269	25	294	26	30	316	22	25	331	18	27	355	24	26	395	38	30	413	18	31	415	3	32	391	-24

	3 YR AVERAGE 2001-2003		3 YR AVERAGE 2002-2004		3 YR AVERAGE 2003-2005		3 YR AVERAGE 2004-2006		3 YR AVERAGE 2005-2007		3 YR AVERAGE 2006-2008		3 YR AVERAGE 2007-2009		3 YR AVERAGE 2008-2010		3 YR AVERAGE 2009-2011										
JANUARY	38	38	-4	40	1	41	41	1	42	42	1	41	41	-1	43	43	2	44	44	1	43	43	-1	45	45	2	
FEBRUARY	29	68	0	37	77	9	41	81	4	42	84	3	39	80	-5	45	88	8	44	88	0	41	84	-4	35	80	-3
MARCH	32	100	1	41	118	18	44	126	8	51	136	10	48	128	-8	46	134	6	49	137	3	53	137	0	53	133	-4
APRIL	40	140	4	39	157	18	46	172	15	42	178	6	40	168	-9	40	174	5	50	186	13	52	189	2	48	182	-7
MAY	44	184	9	56	213	29	56	228	15	48	226	-2	38	206	-28	42	216	10	48	234	18	53	242	8	56	237	-8
JUNE	41	225	13	39	252	27	37	265	13	36	262	-3	38	244	-18	54	270	28	59	294	24	68	310	16	55	292	-17
JULY	35	260	19	42	294	34	53	318	24	56	318	0	52	296	-22	54	324	28	50	344	20	61	371	27	60	352	-18
AUGUST	35	295	25	33	327	32	44	362	35	45	363	1	51	347	-16	47	370	24	48	392	22	43	414	22	48	400	-14
SEPTEMBER	27	322	21	28	355	33	39	401	46	43	405	4	42	389	-16	46	416	27	51	443	27	59	473	30	50	450	-23
OCTOBER	33	356	21	43	398	42	43	444	46	47	452	8	40	429	-21	45	461	32	45	488	27	55	528	40	57	507	-21
NOVEMBER	28	383	24	32	430	47	41	485	55	37	489	4	35	464	-25	33	494	30	36	524	30	40	568	44	53	560	-8
DECEMBER	35	418	27	36	466	48	40	525	59	43	533	7	46	510	-21	47	541	31	46	570	29	52	620	49	55	615	-4

	3 YR AVERAGE 2010-2012		3 YR AVERAGE 2011-2013		3 YR AVERAGE 2012-2014		3 YR AVERAGE 2013-2015					
JANUARY	42	42	-3	46	46	4	51	51	5	48	48	-3
FEBRUARY	37	79	-1	42	88	9	33	84	-4	38	86	2
MARCH	48	127	-6	45	133	6	49	133	0	49	135	1
APRIL	40	168	-14	43	176	8	43	176	0	54	188	12
MAY	50	218	-19	54	230	12	37	213	-17	52	240	27
JUNE	50	268	-21	44	274	6	50	263	-11	47	287	24
JULY	75	344	-9	63	337	-7	54	317	-20	44	331	14
AUGUST	42	385	-15	42	379	-7	47	364	-16	47	378	14
SEPTEMBER	48	433	-17	42	421	-12	56	419	-2			
OCTOBER	54	487	-20	46	467	-20	45	465	-3			
NOVEMBER	53	541	-20	63	530	-10	40	504	-26			
DECEMBER	55	596	-20	88	618	22	52	556	-62			

1 most runs per month record is 29 years old
apr 1984 = 68

may 1 2004 = 67
jan 2 2014 = 56
aug 3 2007 = 56
feb 4 2008 = 52
oct 5 2010 = 67
mar 6 2009 = 68
sep 7 2008 = 69
nov 8 2011 = 78
jun 9 2008 = 82
jul 10 2012 = 89
dec 11 2013 = 156

10 new most runs per month records set in last 7 years

* Indicates tie with another year

(4) Most Runs per Month records set in last 3 years

(10) Most Runs per Month records set in last 7 years

11 least runs per month records are at least 25 years old
jan 1976 = 7
sep 1977 = 8
aug 1978 = 14
mar * 1978 = 15
mar * 1980 = 15
feb * 1982 = 9
feb * 1986 = 9
dec 1982 = 9
jul 1982 = 11
may 1983 = 9
apr 1983 = 10
oct 1985 = 6
nov 1985 = 6

0 new least runs per month records set in last 20 years
jun 1993 = 13

CHARLOTTE FIRE DEPARTMENT

HISTORY OF TOTAL RUNS BY YEAR

HISTORY OF HIGHEST / LOWEST NUMBER OF RUNS

HISTORY OF LOWEST / HIGHEST NUMBER OF RUNS BY INDIVIDUAL MONTHS

<u>YEAR</u>	<u>TOTAL RUNS</u>	<u>MONTH / YEAR</u>	<u>NUMBER</u>		<u>MONTH</u>	<u>LOWEST</u>	<u>HIGHEST</u>
			<u>OF RUNS</u>	<u>MOST / LEAST</u>			
1976	217	Dec-13	156	Most	JANUARY	7	56
1977	247	Jul-12	89	Most	FEBRUARY	9	52
1978	242	Jun-08	82	Most	MARCH	15	68
1979	197	Nov-11	78	Most	APRIL	10	68
1980	272	Sep-08	69	Most	MAY	9	67
1981	237	Mar-09	68	Most	JUNE	13	82
1982	185	Apr-84	68	Most	JULY	11	89
1983	185	May-04	67	Most	AUGUST	14	56
1984	283	Oct-10	67	Most	SEPTEMBER	8	69
1985	224	.Aug 07, 14	56	Most	OCTOBER	6	67
1986	204	Jan-14	56	Most	NOVEMBER	6	78
1987	292	Feb-08	52	Most	DECEMBER	9	156
1988	313	Mar-80	15	Least			
1989	273	Mar-78	15	Least			
1990	253	Aug-78	14	Least			
1991	239	Jun-93	13	Least			
1992	240	Jul-82	11	Least			
1993	262	Apr-83	10	Least			
1994	304	Feb-86	9	Least			
1995	316	May-83	9	Least			
1996	328	Dec-82	9	Least			
1997	349	Feb-82	9	Least			
1998	389	Sep-77	8	Least			
1999	446	Jan-76	7	Least			
2000	403	Nov-85	6	Least			
2001	397	Oct-85	6	Least			
2002	373						
2003	485						
2004	541						
2005	550						
2006	507						
2007	472						
2008	644						
2009	595						
2010	620						
2011	631						
2012	536						
2013	687						
2014	566						
2015 YTD	397						

CHARLOTTE FIRE DEPARTMENT

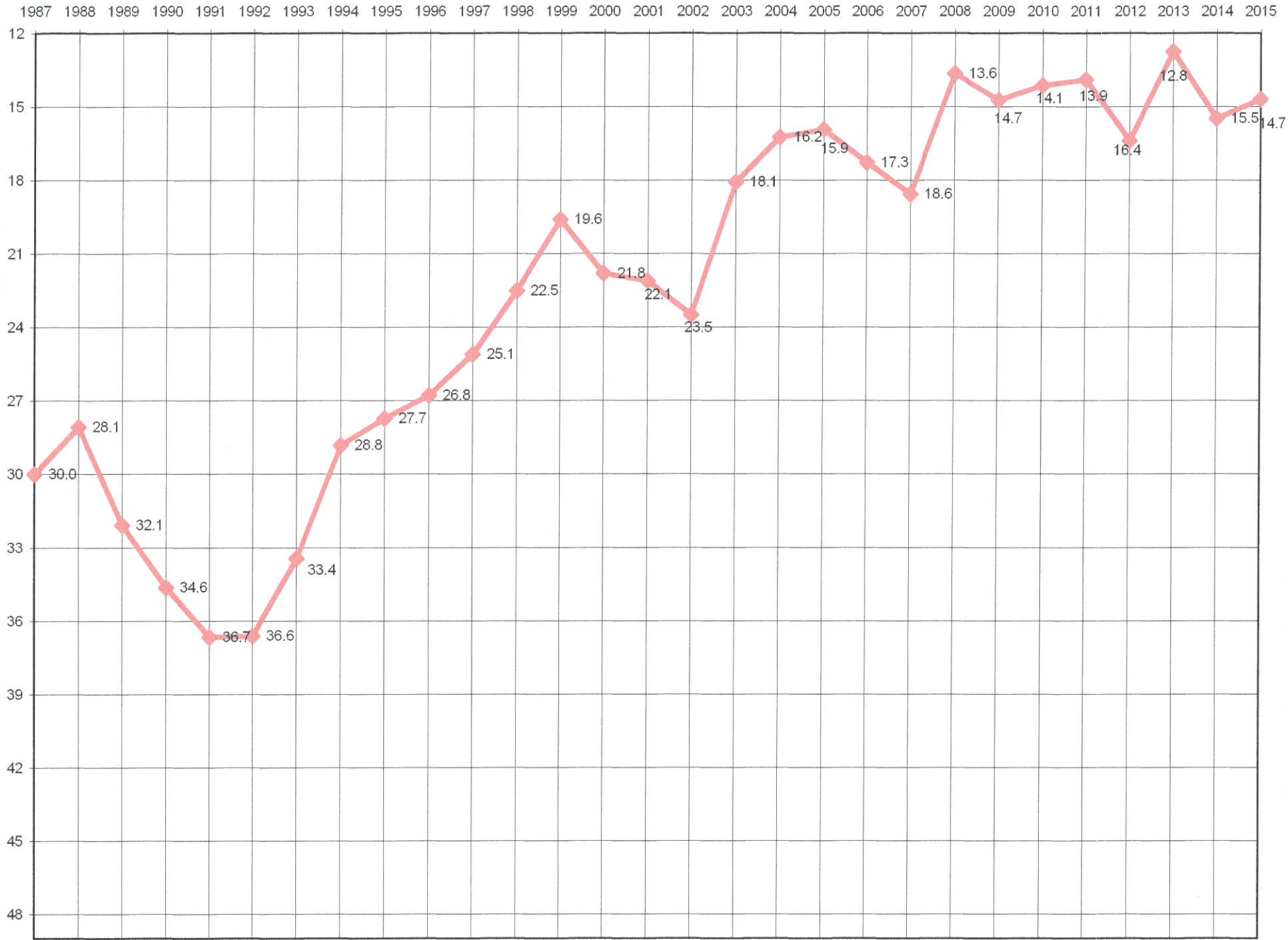
HISTORY OF TOTAL RUNS BY YEAR

YEAR	TOTAL RUNS	ON AVERAGE A RUN EVERY	
		HOURS	DAYS
1976	217	40.5	1.7
1977	247	35.5	1.5
1978	242	36.2	1.5
1979	197	44.5	1.9
1980	272	32.3	1.3
1981	237	37.0	1.5
1982	185	47.4	2.0
1983	185	47.4	2.0
1984	283	31.0	1.3
1985	349	25.1	1.0
1986	204	42.9	1.8
1987	292	30.0	1.3
1988	313	28.1	1.2
1989	273	32.1	1.3
1990	253	34.6	1.4
1991	239	36.7	1.5
1992	240	36.6	1.5
1993	262	33.4	1.4
1994	304	28.8	1.2
1995	316	27.7	1.2
1996	328	26.8	1.1
1997	349	25.1	1.0
1998	389	22.5	0.9
1999	446	19.6	0.8
2000	403	21.8	0.9
2001	397	22.1	0.9
2002	373	23.5	1.0
2003	485	18.1	0.8
2004	541	16.2	0.7
2005	550	15.9	0.7
2006	507	17.3	0.7
2007	472	18.6	0.8
2008	644	13.6	0.57
2009	595	14.7	0.61
2010	620	14.1	0.59
2011	631	13.9	0.58
2012	536	16.4	0.68
2013	687	12.8	0.53
2014	566	15.5	0.64
2015 YTD	397	14.7	0.61

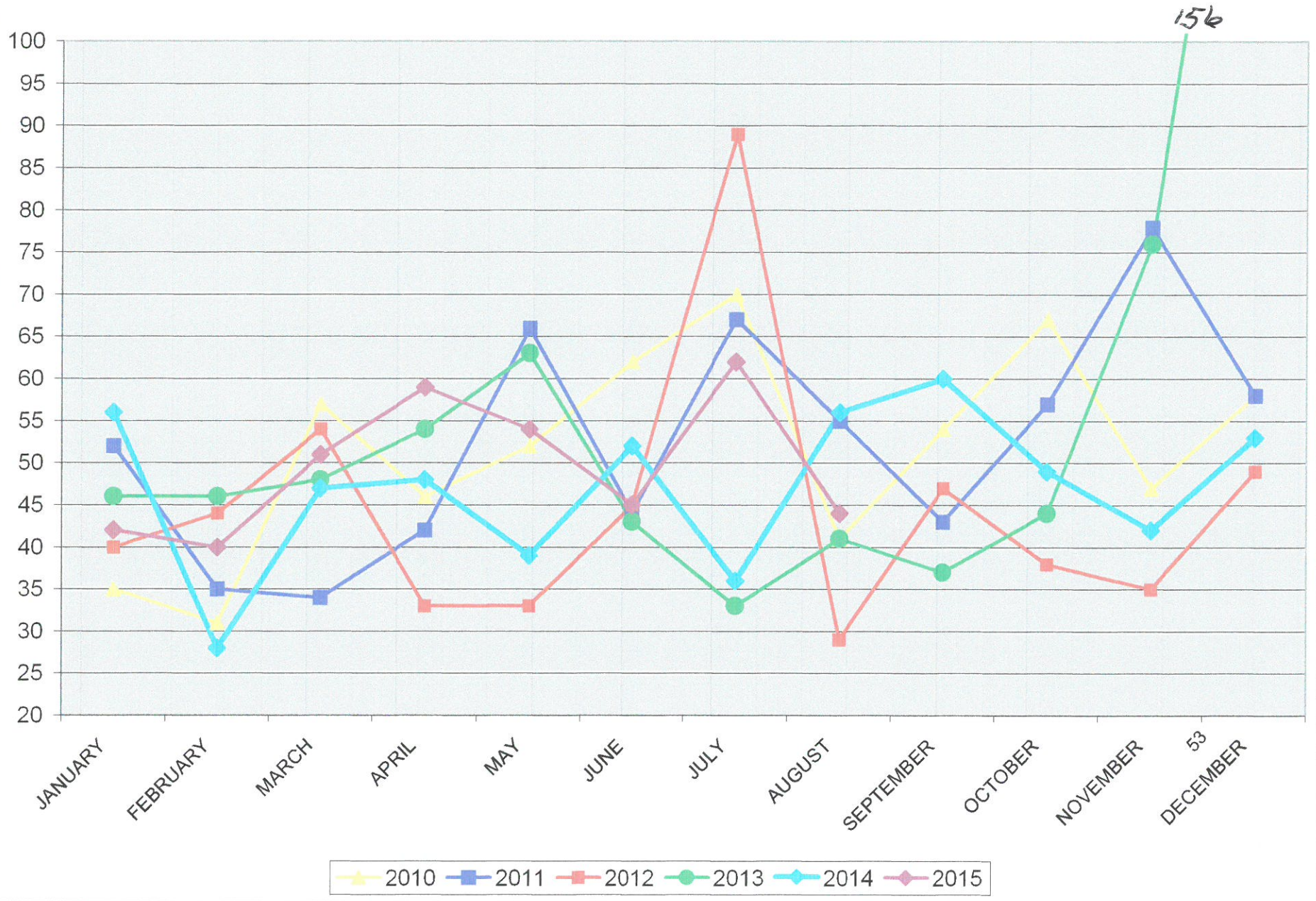
HISTORY OF HIGHEST / LOWEST NUMBER OF RUNS

MONTH / YEAR	NUMBER OF RUNS	ON AVERAGE A RUN EVERY		RUNS PER DAY
		HOURS	DAYS	
Dec-13	156	4.8	0.20	5.032
Jul-12	89	8.4	0.35	2.871
Jun-08	82	8.8	0.37	2.733
Nov-11	78	9.2	0.38	2.600
Sep-08	69	10.4	0.43	2.300
Apr-84	68	10.6	0.44	2.267
Mar-09	68	10.9	0.46	2.194
May-04	67	11.1	0.46	2.161
Oct-10	67	11.1	0.46	2.161
Aug 07, 14	56	13.3	0.55	1.806
Jan-14	56	13.3	0.55	1.806
Feb-08	52	13.4	0.56	1.793
Mar-80	15	49.6	2.07	0.484
Mar-78	15	49.6	2.07	0.484
Aug-78	14	53.1	2.21	0.452
Jun-93	13	55.4	2.31	0.433
Jul-82	11	67.6	2.82	0.355
Apr-83	10	72.0	3.00	0.333
Feb-86	9	74.7	3.11	0.321
Feb-82	9	74.7	3.11	0.321
May-83	9	82.7	3.44	0.290
Dec-82	9	82.7	3.44	0.290
Sep-77	8	90.0	3.75	0.267
Jan-76	7	106.3	4.43	0.226
Nov-85	6	120.0	5.00	0.200
Oct-85	6	124.0	5.17	0.194
2015	RUNS	HOURS	DAYS	RUNS PER DAY
JANUARY	42	17.7	0.738	1.355
FEBRUARY	40	16.8	0.700	1.429
MARCH	51	14.6	0.608	1.645
APRIL	59	12.2	0.508	1.967
MAY	54	13.8	0.574	1.742
JUNE	45	16.0	0.667	1.500
JULY	62	12.0	0.500	2.000
AUGUST	44	16.9	0.705	1.419
SEPTEMBER				
OCTOBER				
NOVEMBER				
DECEMBER				

ON AVERAGE ONE FIRE RUN EVERY ___ HOURS



Comparing Runs per Month - 2010 through 2015



Comparing Runs per Month - 2013, 2014, 2015

